



Live in the **Comfort Zone**



GREEN
ENERGY



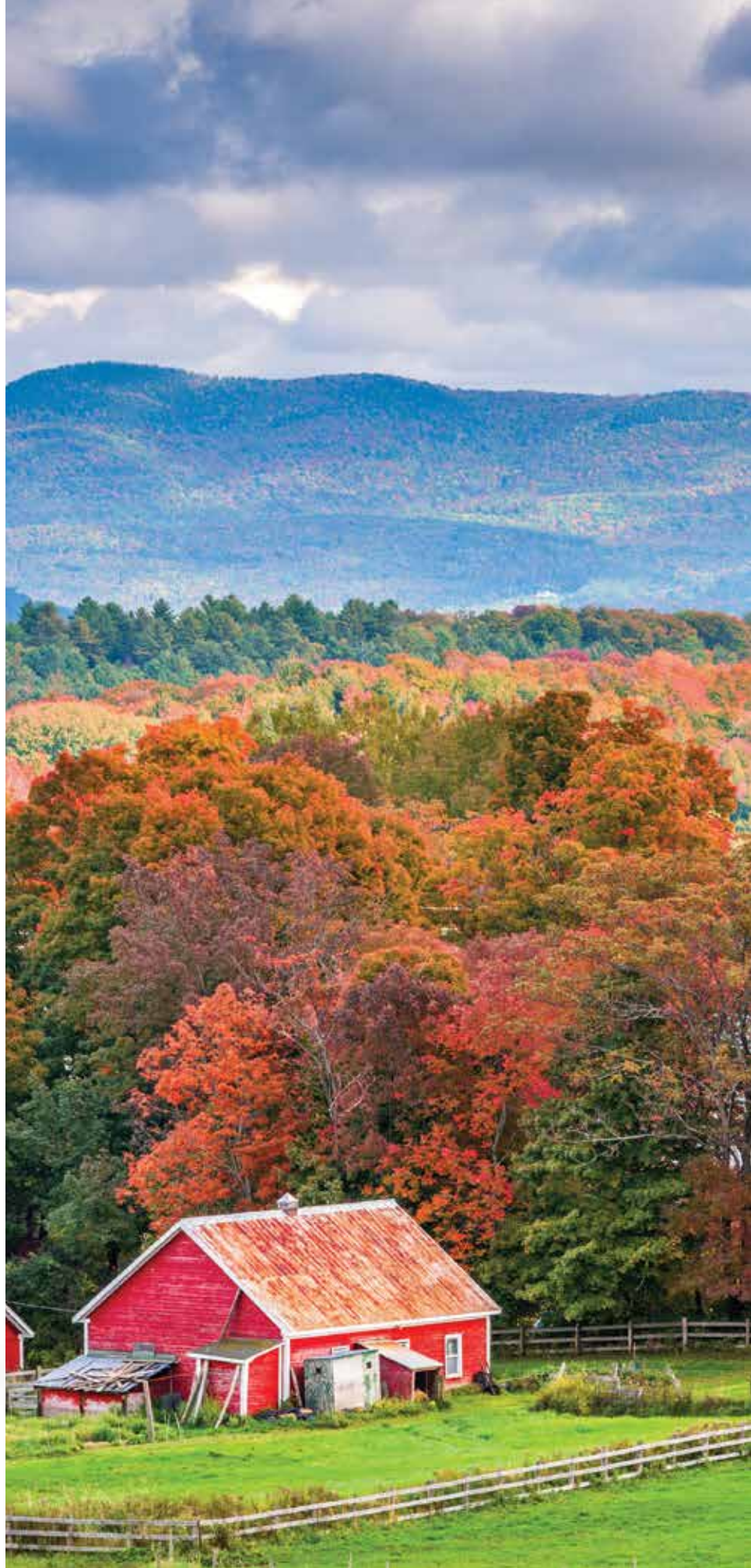
HearthStone is proud to be a Vermont company.

Located in Morrisville, Vermont, we know about keeping your home warm and comfortable in all seasons.

For years, our dedicated Vermont craftsmen have been committed to building quality stoves, handcrafting each HearthStone to meet the highest standards using the finest materials and the most advanced heating technology. As proof, every HearthStone soapstone stove is signed by the stove builder.

The HearthStone brand is an assurance – a guarantee that your appliance is built in the rich tradition of our company, and will serve you faithfully for years to come.

Thanks for making HearthStone part of your life.





WOOD	4
Equinox	8
Mansfield.....	10
Heritage TruHybrid™	12
Heritage.....	14
Homestead.....	16
Castleton TruHybrid™	18
Castleton	20
Tribute	22
Green Mountain 80 TruHybrid™	24
Green Mountain 60 TruHybrid™	26
Green Mountain 40 TruHybrid™	28
Manchester TruHybrid™	30
Manchester	32
Shelburne.....	34
Craftsbury.....	36
Clydesdale	38
Green Mountain Insert 70	40
WFP-100 Montgomery.....	42
WFP-75 Montgomery.....	44
HASE	46
Bari.....	46
Tula	48
COOK	50
Deva	50
GAS	52
Waitsfield DX.....	54
Bristol DX	56
Champlain.....	58
Stowe	60
ACCESSORIES	62
SPECIFICATIONS	64

Live in the Comfort Zone

There is nothing quite like sitting by a wood fire.

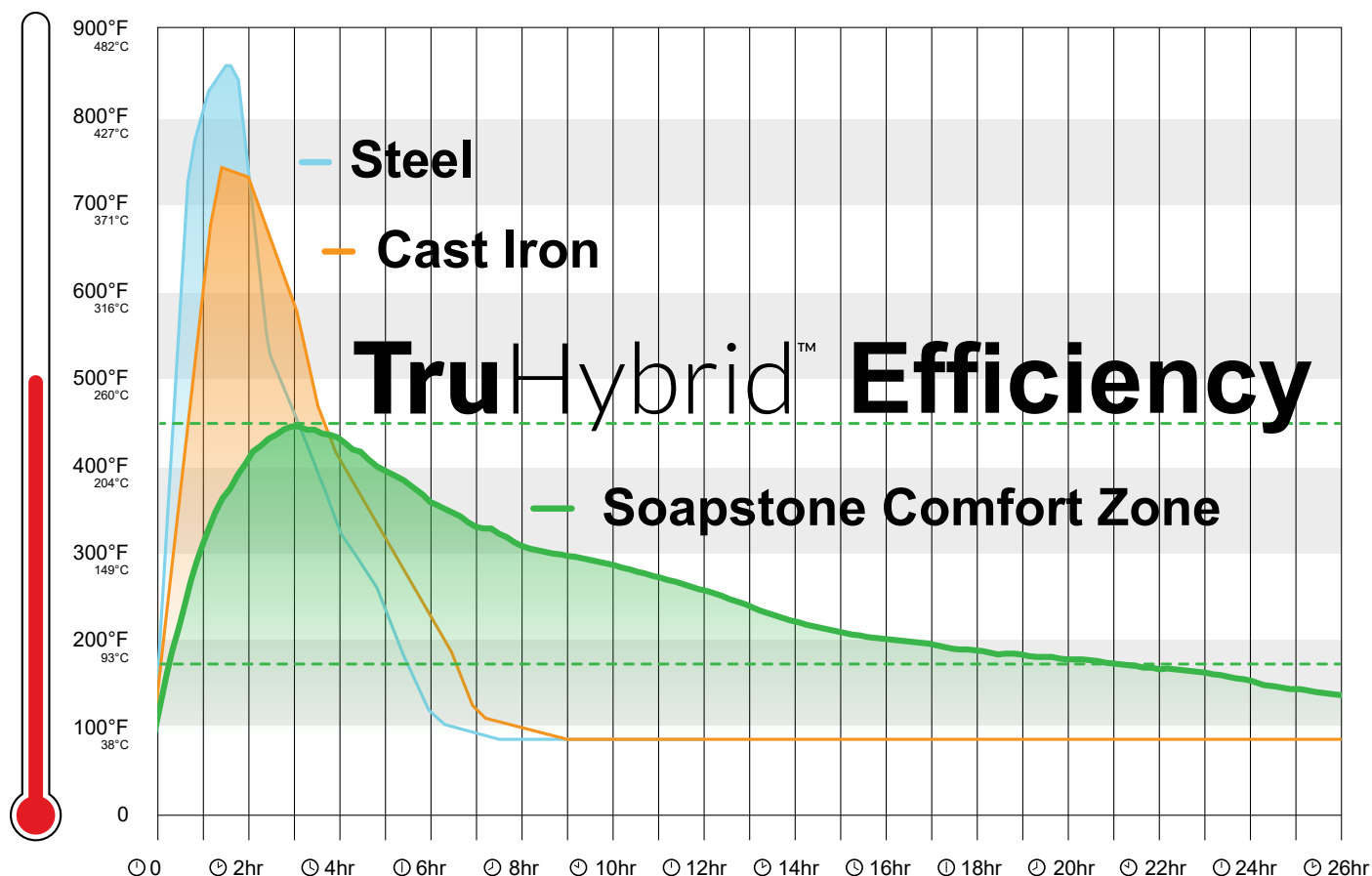
Every HearthStone wood burning product is a beautiful piece of furniture that will compliment the charm of your home and provide a cozy, comfortable place to relax with family and friends.

Our stoves are built using soapstone. Soapstone is a natural material which absorbs the sharp heat of a fire, stores the energy, then radiates a gentle heat back into the living space. This means your home stays at a comfortable temperature longer and you stay in the Comfort Zone.



heatlife™

HearthStone TruHybrid™ stoves burn slowly, cleanly and efficiently to heat your home with less wood.



HeatLife™ measures the total hours of usable heat from a single load of wood. Using soapstone, HearthStone wood stoves retain heat and deliver consistent warmth long after the fire dies down. A long HeatLife™ means you're using less wood, saving money and heating efficiently.



Our Green Energy Promise

HearthStone is committed to providing heating solutions which are renewable, carbon neutral, and clean.

All of our wood stoves use modern, low emission combustion technology. They exceed even the strictest EPA guidelines, so you can be sure they burn clean today and for years to come.

HearthStone's Green Energy promise is a promise for the future. By choosing sustainable heating solutions, we choose to protect our environment for future generations.

Heating with wood is carbon-neutral. A tree decomposing in the forest emits the same amount of carbon dioxide as burning that same tree in an efficient HearthStone wood stove.

Most of the fuel wood in the US and Canada is used within 40 miles of where it is harvested. When you consider everything that goes into processing and delivering other fuels, wood has a very low carbon footprint.

Our Green Energy seal is a reminder of HearthStone's Green Energy promise.

hearthstone

Clean Combustion

At HearthStone, we believe that your stove should always burn clean.

Clean And Efficient: We use a self-regulating double combustion system that ensures your HearthStone burns cleanly and effectively on any setting.

1 Primary Combustion: The wood is burned at the bottom of the stove.

2 Secondary Combustion: The gases from the wood are burned at the top of the stove.

Easy To Operate: With one lever you control the burn rate. Turn your stove to high and stoke a big fire. Turn it down to lower the fire once your home is warm. Turn it all the way to low to keep a fire burning overnight.



TruHybrid™ Combustion System

Ultra Clean Combustion

Our TruHybrid™ stoves burn cleanly and efficiently before and after you engage the catalyst.

Ultra Clean: The TruHybrid™ system combines primary and secondary combustion with a tertiary combustion using a catalyst to take care of any unburned dust and gasses.

Uber-Efficient: Unlike other catalytic stoves, the TruHybrid™ system burns clean even if you forget to engage the catalyst! Engage the catalyst to complete the combustion and get as much heat from your wood as possible.

Easy To Operate: This system is easy to operate with a single lever air control and an easy catalyst control handle. Open the catalyst control handle for smokeless startups, close it for long, efficient fires.

The catalysts used in the TruHybrid™ Combustion System operate at temperatures between 1200° -1400° F, which is lower than traditional wood stove catalysts. Because of lower catalyst operating temperatures and the catalysts working on pre-cleaned exhaust, the TruHybrid™ Combustion System promotes longer catalyst life, and fewer maintenance concerns.

Your HearthStone TruHybrid™ stove will burn ultra clean and efficient for a surprisingly long time, keeping your home in the Comfort Zone.



All of our TruHybrid™ stoves meet 2020 U.S. EPA clean air standards.

HearthStone supports the EPA Burn Wise program. Burn Wise is an EPA program which promotes the importance of burning the right wood, the right way, in the right appliance. Visit the EPA website to learn more about the Burn Wise program and look for the Burn Wise logo on our products! <https://www.epa.gov/burnwise>



Equinox Wood Stove



EQUINOX MODEL 8000 MATTE BLACK + SOAPSTONE WITH LEFT SIDE DOOR



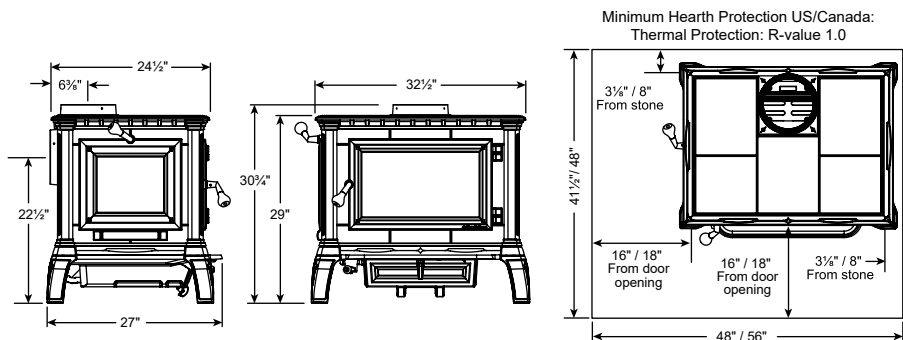
FINISH OPTIONS:



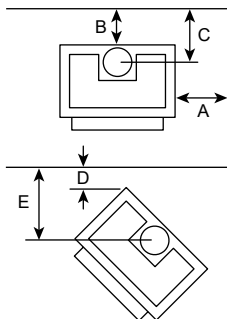
Matte Black



Removable ash pan with lid.



CLEARANCE TO COMBUSTIBLE MATERIALS



	Single-wall connector pipe, no rear heat shield	Double-wall connector pipe, with rear heat shield
A	21"	19" *
B	21"	6"
C	26 3/4"	11 3/4"
D	15"	13 1/2" *
E	30 3/8"	28 3/8" *

EQUINOX

Model 8000

- **Right or Left Side Load Door**
Flexible installation
- **Oven-Style Side Load Door**
Helps keep ashes in firebox
- **Top or Rear Flue Exit**
Flexible installation
- **Single Lever Stove Control**
Easy operation, consistent performance
- **Secondary Burn Combustion System**
Clean burning, efficient, reduces creosote build-up
- **Ash Pan**
Easy to clean, easily accessible

SPECIFICATIONS

Heats up to	3,500 sq ft
Firebox Capacity	4.0 cu ft
BTU	Up to 120,000
EPA Certified	3.1 g/hr
Efficiency	78% LHV, 72% HHV
Burn Time	Up to 12 hours
HeatLife	Up to 16 hours
Max. Log Length	25" Left-Right, 20" Front-Back
Flue Exit & Diameter	Top or Rear - 8"
Ash Pan	Included
Side Load Door	Choose Left or Right
Actual Weight	689 lbs.
Alcove Certified	Yes
Mobile Home Certified	Yes

ACCESSORIES

Side Door Lock Kit	90-70200
Convection Blower	90-57502
Rear Heat Shield	90-68000
Outside Air Adapter	93-53500
Spark Screen	93-69000

* Non-door side -or- locked side door

Mansfield

Wood Stove



MANSFIELD MODEL 8012 MATTE BLACK + SOAPSTONE



FINISH OPTIONS:



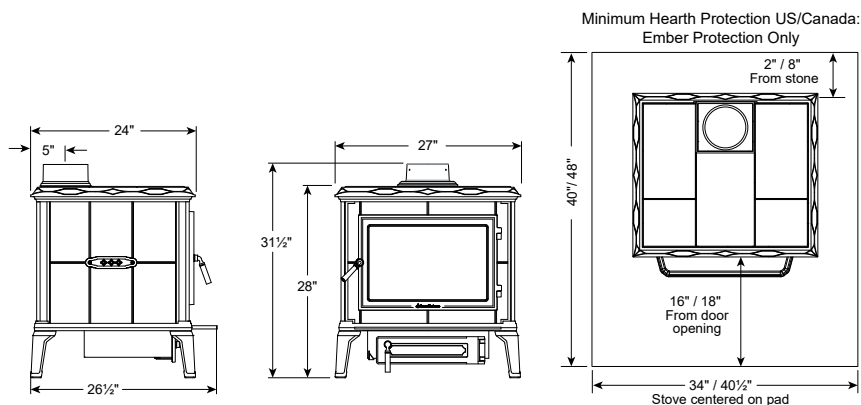
Matte Black



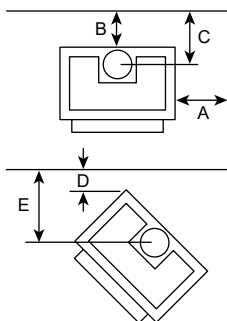
Brown Majolica Enamel



Mansfield featured in Brown Majolica Enamel, shown with soapstone steamer (90-99112).



CLEARANCE TO COMBUSTIBLE MATERIALS



	Single-wall connector pipe, no rear heat shield	Double-wall connector pipe, with rear heat shield
A	18"	18"
B	19"	8"
C	24"	13"
D	14"	14"
E	27"	27"

MANSFIELD

Model 8012

- **Deep Firebox**
Easy to load front-to-back, and side-to-side
- **Single Lever Stove Control**
Easy operation, consistent performance
- **Secondary Burn Combustion System**
Clean burning, efficient, reduces creosote build-up
- **Ash Pan**
Easy to clean, easily accessible

SPECIFICATIONS

Heats up to	2,500 sq ft
Firebox Capacity	3.2 cu ft
BTU	Up to 80,000
EPA Certified	2.8 g/hr
Efficiency	72% LHV, 67% HHV
Burn Time	Up to 10 hours
HeatLife	Up to 14 hours
Maximum Log Length	21" Left-Right, 19" Front-Back
Flue Exit & Diameter	Top - 6"
Ash Pan	Included
Outside Air Adapter	Included
Actual Weight	550 lbs.
Alcove Certified	Yes
Mobile Home Certified	Yes

ACCESSORIES

Convection Blower	90-57000
Rear Heat Shield	90-57200

Heritage TruHybrid™ Wood Stove



HERITAGE Truhybrid™ MODEL 8024 BLACK HIGH-GLOSS ENAMEL + SOAPSTONE WITH LEFT SIDE DOOR



Heritage featured in Brown Majolica Enamel.

FINISH OPTIONS:



Matte Black



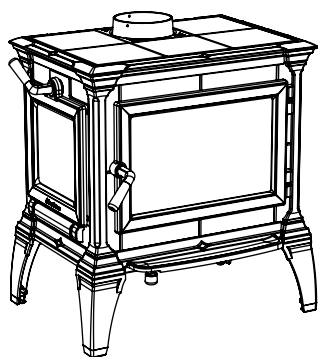
Brown Majolica Enamel



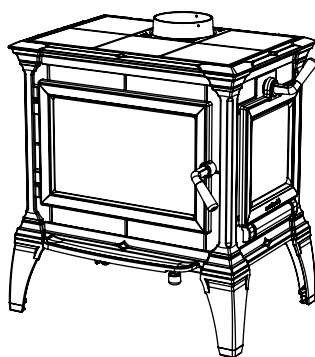
Seafoam Majolica Enamel



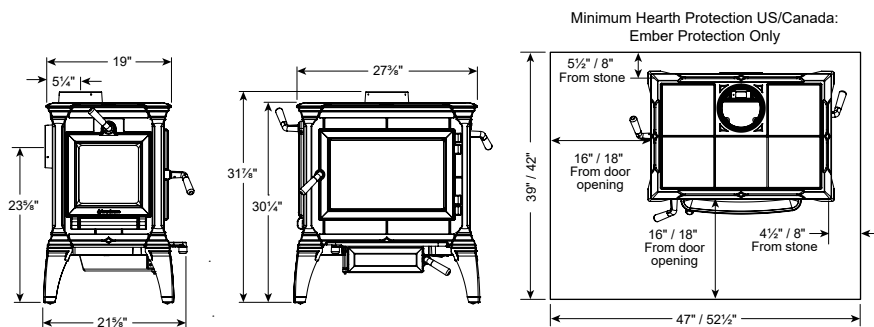
Black High-Gloss Enamel



Left side load - 8024L

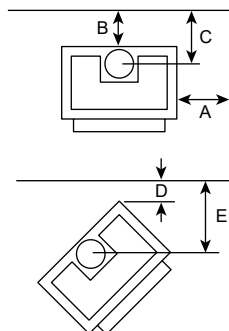


Right side load - 8024R



Shown with optional ash pan.

CLEARANCE TO COMBUSTIBLE MATERIALS



	Single-wall connector pipe, no rear heat shield	Double-wall connector pipe, with rear heat shield
A	16"	16" *
B	16"	6"
C	21"	11"
D	8"	8" *
E	21 1/4"	21 1/4" *

HERITAGE

Model 8024

TruHybrid™

2020 READY

- **TruHybrid™ Combustion System**
Clean burning, uber-efficient, burn times up to 25 hours**.
- **Single Lever Air Control**
Easy operation, consistent performance
- **Easy Catalyst Control Handle**
Open side lever for smokeless startups, close for long, efficient fires
- **Durable Construction**
1 1/4" soapstone with iron protectors ensure a lifetime of trouble free service
- **Left or Right Side Door**
Front door coordinated with side door for flexible installation
- **Top Or Rear Flue Exit**
Freestanding or hearth configuration, use the flue cap as a cooking plate with the rear exit

SPECIFICATIONS

Efficiency	77% HHV
HeatLife™	25+ hrs**
2020 EPA Certified	0.54 g/hr
Heats up to	2,100 sq ft
Firebox Capacity	2.2 cu ft
BTU	Up to 60,000
Maximum Log Length	21"
Flue Exit & Diameter	Top or Rear - 6"
Side Load Door	Choose Left or Right
Ash Pan	Optional
Actual Weight	560 lbs.
Alcove Certified	Yes
Mobile Home Certified	Yes

ACCESSORIES

Ash Pan	90-57220
Convection Blower	90-57210
Rear Heat Shield	90-68210
Outside Air Adapter	90-53220

* Non-door side -or- locked side door

Heritage

Wood Stove



HERITAGE MODEL 8023 MATTE BLACK + SOAPSTONE WITH LEFT SIDE DOOR



Heritage featured in Brown Majolica Enamel.

FINISH OPTIONS:



Matte Black



Brown Maiolica Enamel



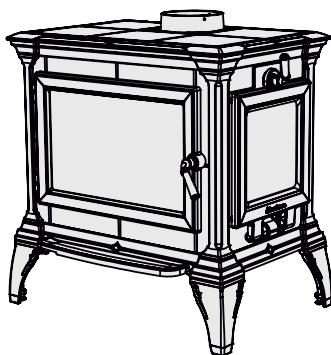
Seafoam Majolica Enamel



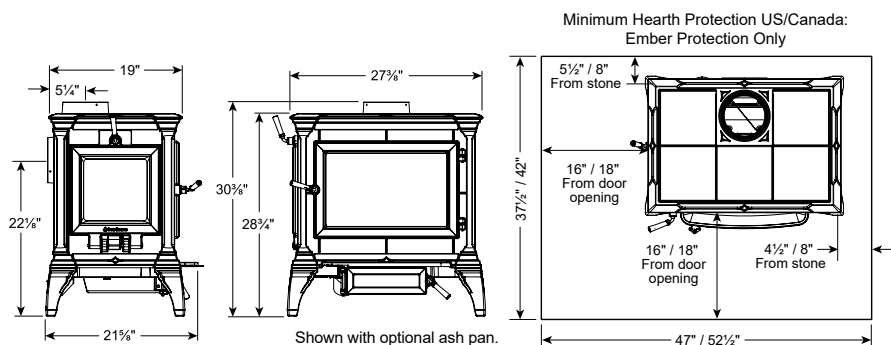
Black High-Gloss Enamel



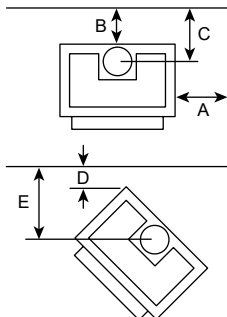
Left side load - 8023L



Right side load - 8023R



CLEARANCE TO COMBUSTIBLE MATERIALS



	Single-wall connector pipe, no rear heat shield	Double-wall connector pipe, with rear heat shield
A	17"	15" *
B	16"	7"
C	21"	12"
D	12"	11" *
E	25½"	24½" *

HERITAGE

Model 8023

- **Left Side Load Or Right Side Load**
Front door coordinated with side door for flexible installation
- **Oven-Style Side Load Door**
Helps keep ashes in firebox
- **Top Or Rear Flue Exit**
Flexible installation
- **Single Lever Stove Control**
Easy operation, consistent performance
- **Secondary Burn Combustion System**
Clean burning, efficient, reduces creosote build-up
- **Optional Ash Pan**
Easy to clean, easily accessible

SPECIFICATIONS

Heats up to	2,000 sq ft
Firebox Capacity	2.2 cu ft
BTU	Up to 60,000
EPA Certified	2.0 g/hr
Efficiency	75% LHV, 70% HHV
Burn Time	Up to 8 hours
HeatLife	Up to 12 hours
Maximum Log Length	21"
Flue Exit & Diameter	Top or Rear - 6"
Side Load Door	Choose Left or Right
Actual Weight	550 lbs.
Alcove Certified	Yes
Mobile Home Certified	Yes

ACCESSORIES

Ash Pan.....	90-57220
Convection Blower	90-57210
Rear Heat Shield.....	90-68210
Outside Air Adapter	90-53220

* Non-door side -or- locked side door

Homestead

Wood Stove



HOMESTEAD MODEL 8570 BROWN MAJOLICA ENAMEL + SOAPSTONE



Hearthmount Homestead featured in Matte Black with hearth surround.

FINISH OPTIONS:

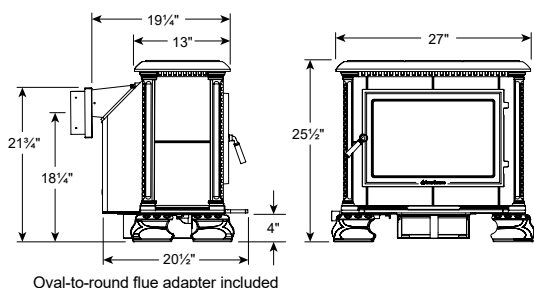


Matte Black

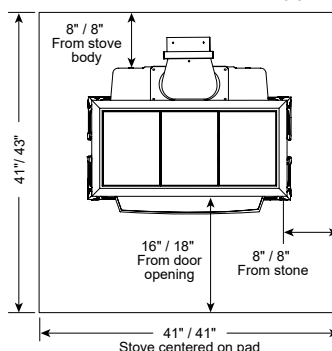


Brown Majolica Enamel

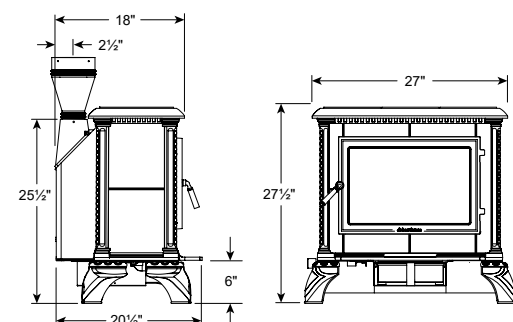
Hearth-Mount



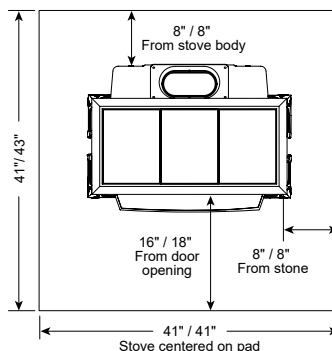
Minimum Hearth Protection US/Canada:
Thermal Protection: R-value 6.6



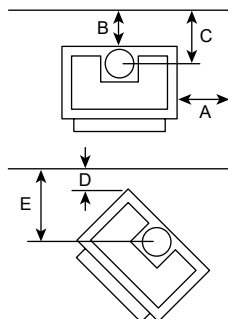
Free-Standing



Minimum Hearth Protection US/Canada:
Thermal Protection: R-value 2.5



CLEARANCE TO COMBUSTIBLE MATERIALS



	Single-wall connector pipe, no rear heat shield		Double-wall connector pipe, with rear heat shield	
	H-M	F-S	H-M	F-S
A	23"	23"	16"	16"
B	26"	26"	7"	7"
C	N/A	28 1/2"	N/A	9 1/2"
D	18"	18"	12"	12"
E	N/A	27 1/4"	N/A	21 1/4"

HOMESTEAD

Model 8570

- **Flexible Installation**
Available as freestanding or hearthmount stove
- **Low Flue Exit**
Uniquely designed as an 'outsert' to sit on your hearth and vent up your fireplace chimney
- **Single Lever Stove Control**
Easy operation, consistent performance
- **Secondary Burn Combustion System**
Clean burning, efficient, reduces creosote build-up
- **Ash Pan**
Easy to clean, easily accessible

SPECIFICATIONS

Heats up to.....	1,800 sq ft
Firebox Capacity.....	2.0 cu ft
BTU.....	Up to 50,000
EPA Certified.....	1.9 g/hr
Efficiency.....	73% LHV, 68% HHV
Burn Time.....	Up to 8 hours
HeatLife.....	Up to 12 hours
Maximum Log Length.....	21"
Flue Exit & Diameter.....	Top or Rear - 6"
Ash Pan.....	Included
Actual Weight.....	360 lbs.
Alcove Certified.....	Yes
Mobile Home Certified.....	Yes

ACCESSORIES

Convection Blower.....	90-57000
Rear Heat Shield.....	95-68700
Outside Air Adapter.....	95-53700
Hearth Surround.....	95-59710

Castleton TruHybrid™ Wood Stove



CASTLETON TruHybrid™ MODEL 8031 MATTE BLACK + SOAPSTONE



Castleton featured in Matte Black.

FINISH OPTIONS:



Matte Black



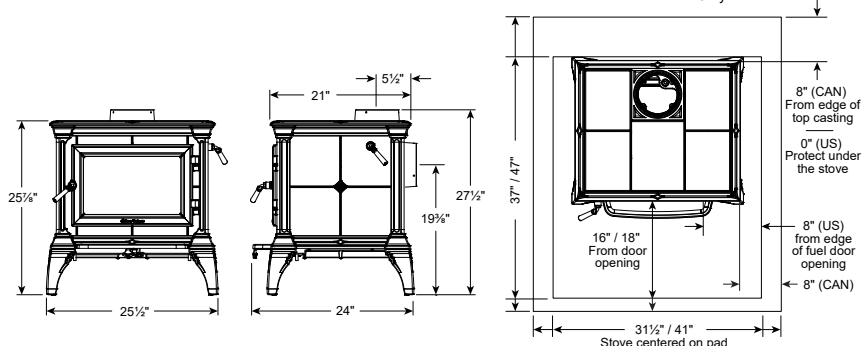
Brown Majolica Enamel



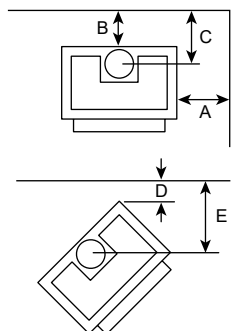
Seafoam Enamel



Minimum Hearth Protection US/Canada:
Ember Protection Only



CLEARANCE TO COMBUSTIBLE MATERIALS



	Single-wall connector pipe, no rear heat shield	Double-wall connector pipe*, with rear heat shield
A	17"	17"
B	15"	8"
C	20"	13"
D	8"	8"
E	20.5"	20.5"

CASTLETON

Model 8031

TruHybrid™

2020 READY

- **TruHybrid™ Combustion System**
Clean burning, uber-efficient, burn times up to 20 hours**.
- **Single Lever Air Control**
Easy operation, consistent performance
- **Easy Catalyst Control Handle**
Open side lever for smokeless startups, close for long, efficient fires
- **Durable Construction**
1 1/4" soapstone with iron protectors ensure a lifetime of trouble free service
- **Top Or Rear Flue Exit**
Flexible installation, free standing or hearth configuration with a cooking plate

SPECIFICATIONS

Efficiency	77% HHV
Burn Time	20+ hrs**
EPA Certified	0.69 g/hr
Heats up to	1,700 sq ft
Firebox Capacity	1.9 cu ft
BTU	Up to 45,000
Efficiency	83% LHV, 77% HHV
Maximum Log Length	18"
Flue Exit & Diameter	Top or Rear - 6"
Ash Pan	n/a
Actual Weight	464 lbs.
Alcove Certified	Yes
Mobile Home Certified	Yes

ACCESSORIES

Rear Heat Shield	90-68300
Convection Blower	90-57210
Outside Air Adapter	90-53300

**Full load of hardwood on lowest burn setting

Castleton Wood Stove



CASTLETON MODEL 8030 BROWN MAJOLICA ENAMEL + SOAPSTONE



FINISH OPTIONS:



Matte Black

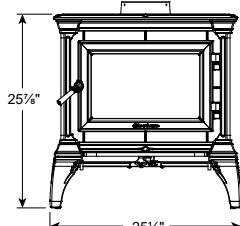
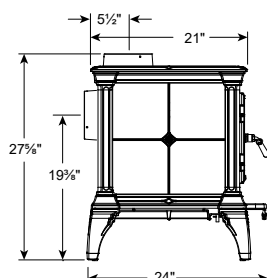


Brown Majolica Enamel

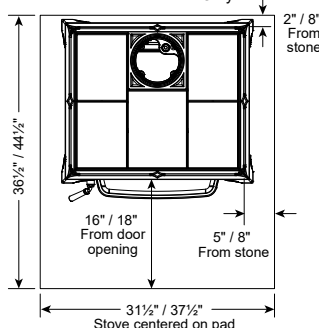


Seafoam Enamel

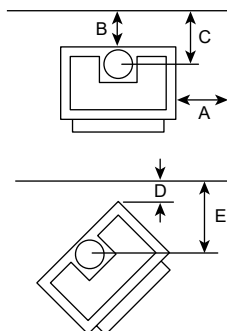
Castleton featured in Matte Black.



Minimum Hearth Protection US/Canada:
Ember Protection Only



CLEARANCE TO COMBUSTIBLE MATERIALS



	Single-wall connector pipe, no rear heat shield	Double-wall connector pipe, with rear heat shield
A	20"	15"
B	18"	6"
C	23"	11"
D	10"	10"
E	23"	23"

CASTLETON

Model 8030

- **Cast Iron Interior Impact Plates**
Protect the soapstone when loading the stove
- **Top Or Rear Flue Exit**
Flexible installation
- **Single Lever Stove Control**
Easy operation, consistent performance
- **Secondary Burn Combustion System**
Clean burning, efficient, reduces creosote build-up

SPECIFICATIONS

Heats up to	1,500 sq ft
Firebox Capacity.....	1.9 cu ft
BTU	Up to 45,000
EPA Certified	2.7 g/hr
Efficiency	78% LHV, 72% HHV
Burn Time	Up to 8 hours
HeatLife	Up to 10 hours
Maximum Log Length.....	18"
Flue Exit & Diameter.....	Top or Rear - 6"
Actual Weight	464 lbs.
Alcove Certified	Yes
Mobile Home Certified	Yes

ACCESSORIES

Rear Heat Shield	90-68300
Convection Blower.....	90-57210
Outside Air Adapter.....	90-53300
Spark Screen.....	90-69300

Tribute

Wood Stove



TRIBUTE MODEL 8040 BROWN ENAMEL + SOAPSTONE



FINISH OPTIONS:



Matte Black

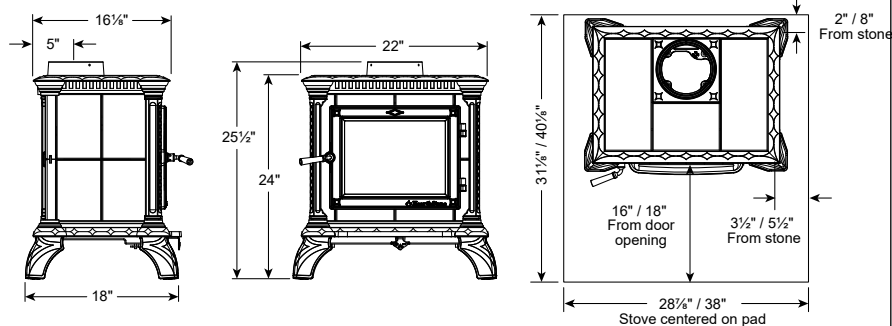


Brown Majolica Enamel

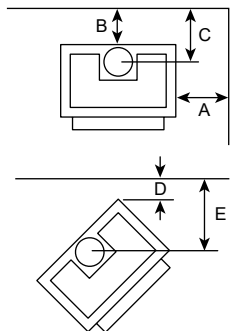


Tribute featured with Brown Majolica Enamel finish.

Minimum Hearth Protection US/Canada:
Thermal Protection: R-value 0.6



CLEARANCE TO COMBUSTIBLE MATERIALS



	Single-wall connector pipe, no rear heat shield	Double-wall connector pipe, with rear heat shield
A	16 1/2"	16 1/2"
B	19"	8"
C	24"	13"
D	17"	7"
E	28 1/2"	18 1/2"

TRIBUTE

Model 8040

- **Compact Size**
Adapts to smaller spaces
- **Single Lever Stove Control**
Easy operation, consistent performance
- **Secondary Burn Combustion System**
Clean burning, efficient, reduces creosote build-up

SPECIFICATIONS

Heats up to.....	1,300 sq ft
Firebox Capacity	1.2 cu ft
BTU	Up to 36,000
EPA Certified	3.0 g/hr
Efficiency	80% LHV, 74% HHV
Burn Time	Up to 5 hours
HeatLife	Up to 7 hours
Maximum Log Length	16"
Flue Exit & Diameter	6" top exit
Actual Weight	318 lbs.
Alcove Certified	Yes
Mobile Home Certified	Yes

ACCESSORIES

Convection Blower	90-57210
Rear Heat Shield	90-68400
Spark Screen	90-69400
Outside Air Adapter	90-53400

Green Mountain 80 TruHybrid™ Wood Stove



GREEN MOUNTAIN 80 TruHybrid™ MODEL 8680 MATTE BLACK

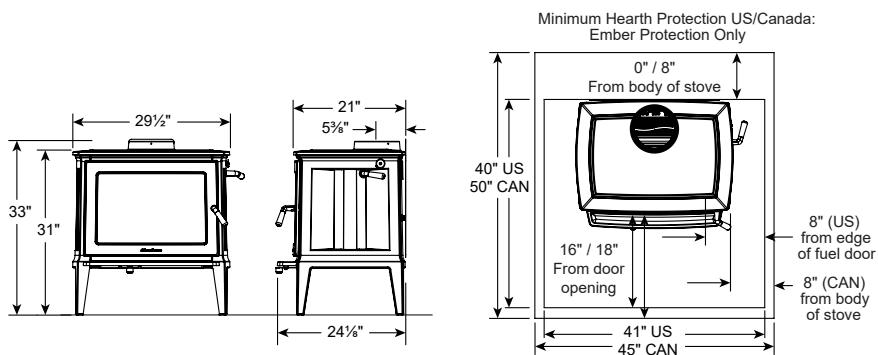


FINISH OPTIONS:

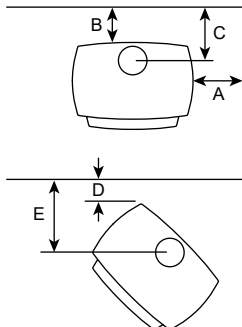


Matte Black

Green Mountain 80 featured with Matte Black finish.



CLEARANCE TO COMBUSTIBLE MATERIALS



	Single-wall connector pipe, included rear heat shield	Double-wall connector pipe, with blower kit heat shield
A	13"	13"
B	8"	5"
C	13"	13"
D	7"	7"
E	20.5"	20.5"

GREEN MOUNTAIN 80

Model 8680

TruHybrid™

2020 READY

- **TruHybrid™ Combustion System**
Clean burning, uber-efficient, burn times up to 30 hours**.
- **Single Lever Air Control**
Easy operation, consistent performance
- **Easy Catalyst Control Handle**
Open side lever for smokeless startups, close for long, efficient fires
- **Durable Construction**
Full cast iron construction with 1 1/4" soapstone lining offers lasting heat and a lifetime of trouble free service
- **Large Front Door Glass**
The giant window warms your home with heat and the flickering light of the fire.

SPECIFICATIONS

Efficiency	81% HHV
Burn Time	30+ hrs**
EPA Certified	0.7 g/hr
Heats up to	2,500 sq ft
Firebox Capacity	3.1 cu ft
BTU	Up to 80,000
Maximum Log Length	23"
Flue Diameter	Top - 8"
Ash Pan	n/a
Actual Weight	550 lbs.
Alcove Certified	Yes
Mobile Home Certified	Yes

ACCESSORIES

Convection Blower	96-57800
Outside Air Adapter	96-53400

**Full load of hardwood on lowest burn setting

Green Mountain 60 TruHybrid™ Wood Stove



GREEN MOUNTAIN 60 TruHybrid™ MODEL 8660 MATTE BLACK



FINISH OPTIONS:

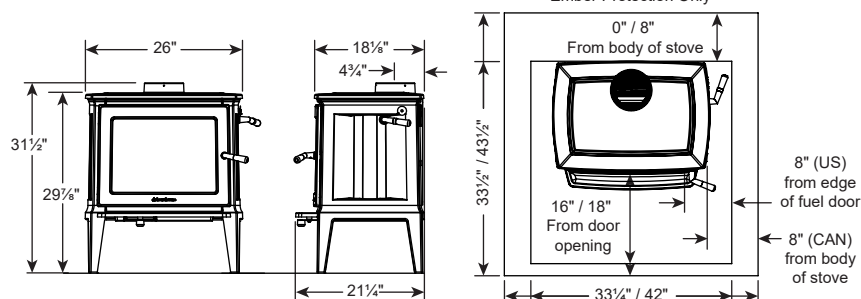


Matte Black

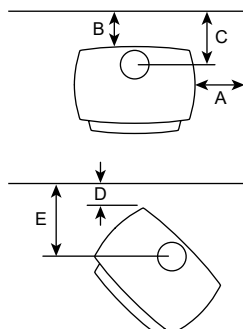
Green Mountain 60 featured with Matte Black finish.



Minimum Hearth Protection US/Canada:
Ember Protection Only



CLEARANCE TO COMBUSTIBLE MATERIALS



	Single-wall pipe, included rear heat shield	Double-wall pipe, with blower kit heat shield
A	13"	13"
B	11"	5"
C	16"	10"
D	7"	7"
E	18.5"	18.5"

GREEN MOUNTAIN 60

Model 8660

TruHybrid™

2020 READY

- **TruHybrid™ Combustion System**
Clean burning, uber-efficient, burn times up to 24 hours**.
- **Single Lever Air Control**
Easy operation, consistent performance
- **Easy Catalyst Control Handle**
Open side lever for smokeless startups, close for long, efficient fires
- **Durable Construction**
Full cast iron construction with 1 1/4" soapstone lining offers lasting heat and a lifetime of trouble free service
- **Large Front Door Glass**
The giant window warms your home with heat and the flickering light of the fire.

SPECIFICATIONS

Efficiency	79% HHV
Burn Time	24+ hrs**
EPA Certified	0.6 g/hr
Heats up to	2,000 sq ft
Firebox Capacity	2.0 cu ft
BTU	Up to 60,000
Maximum Log Length	18"
Flue Diameter	Top - 6"
Ash Pan	n/a
Actual Weight	494 lbs.
Alcove Certified	Yes
Mobile Home Certified	Yes

ACCESSORIES

Convection Blower	96-57400
Outside Air Adapter	96-53400

**Full load of hardwood on lowest burn setting

Green Mountain 40 TruHybrid™ Wood Stove



GREEN MOUNTAIN 40 TruHybrid™ MODEL 8640 MATTE BLACK

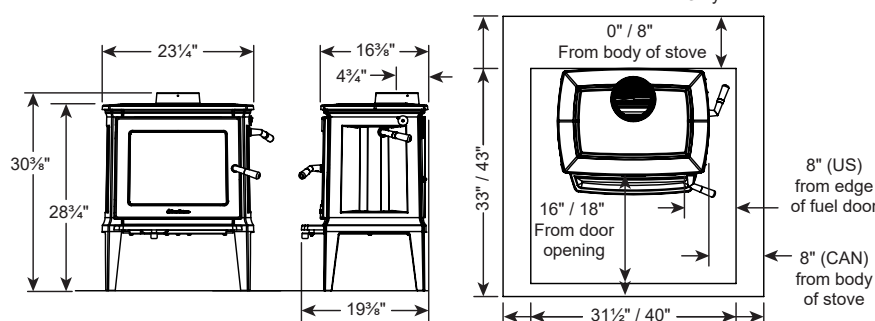


FINISH OPTIONS:

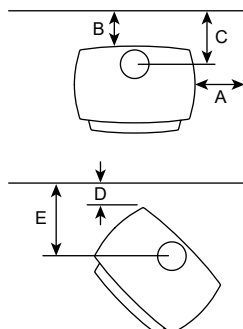


Matte Black

Green Mountain 40 featured with Matte Black finish.

Minimum Hearth Protection US/Canada:
Ember Protection Only

CLEARANCE TO COMBUSTIBLE MATERIALS



	Single-wall connector pipe, with included heat shield	Double-wall connector pipe*, with blower kit heat shield
A	13"	13"
B	9"	7"
C	14"	12"
D	6"	6"
E	16.5"	16.5"

GREEN MOUNTAIN 40

Model 8640

TruHybrid™

2020 READY

- **TruHybrid™ Combustion System**
Clean burning, uber-efficient, burn times up to 16 hours**.
- **Single Lever Air Control**
Easy operation, consistent performance
- **Easy Catalyst Control Handle**
Open side lever for smokeless startups, close for long, efficient fires
- **Durable Construction**
Full cast iron construction with 1 1/4" soapstone lining offers lasting heat and a lifetime of trouble free service
- **Large Front Door Glass**
The giant window warms your home with heat and the flickering light of the fire.

SPECIFICATIONS

Efficiency	79% HHV
Burn Time	16+ hrs**
EPA Certified	0.9 g/hr
Heats up to	1,400 sq ft
Firebox Capacity	1.32 cu ft
BTU	Up to 40,000
Efficiency	86% LHV, 79% HHV
Maximum Log Length	16"
Flue Diameter	Top - 6"
Ash Pan	n/a
Actual Weight	464 lbs.
Alcove Certified	Yes
Mobile Home Certified	Yes

ACCESSORIES

Convection Blower	96-57400
Outside Air Adapter	96-53400

**Full load of hardwood on lowest burn setting

Manchester TruHybrid™ Wood Stove



MANCHESTER Truhybrid™ MODEL 8362 BROWN MAJOLICA ENAMEL WITH LEFT SIDE DOOR



FINISH OPTIONS:



Matte Black

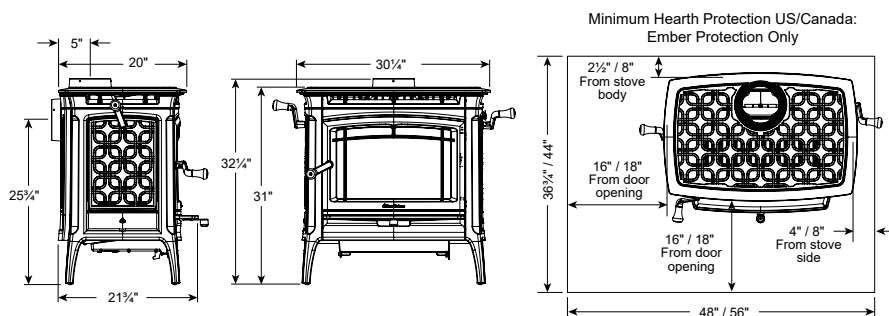


Brown Majolica Enamel

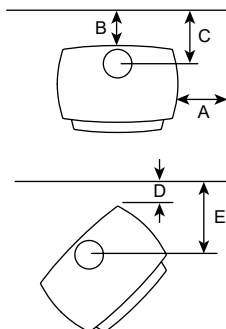


Barn Red Enamel

Manchester featured in Barn Red Enamel



CLEARANCE TO COMBUSTIBLE MATERIALS



	Single-wall connector pipe, no close-clearance heat shield	Double-wall connector pipe, with close-clearance heat shield
A	18"	16" *
B	16"	6"
C	21"	11"
D	9"	9" *
E	21 1/4"	21 1/4" *

MANCHESTER

Model 8361

TruHybrid™
2020 READY

- **TruHybrid™ Combustion System**
Clean burning, uber-efficient, burn times up to 30 hours**
- **Single Lever Air Control**
Easy operation, consistent performance
- **Easy Catalyst Control Handle**
Open side lever for smokeless startups, close for long, efficient fires
- **Convection Air Channel, Heat Exchanger**
Pulls more heat out of the stove and into your home
- **Durable Construction**
Full cast iron construction with 1 1/4" soapstone lining offers lasting heat
- **Oven-Style Side Door**
Convenient fire loading, oven-style door helps keep ashes in the firebox
- **Decorative Cast Rear Heat Shield**
Finished look from any angle
- **Top Or Rear Flue Exit**
Flexible installation, free standing or hearth configuration with a cooking plate
- **Ash Pan**
Standard feature, easy to clean

SPECIFICATIONS

Efficiency	78% HHV
HeatLife™	30+ hrs**
2020 EPA Certified	0.65 g/hr
Heats up to	2,400 sq ft
Firebox Capacity	2.45 cu ft
BTU	Up to 75,000
Maximum Log Length	24"
Flue Exit & Diameter	Top or Rear - 6"
Ash Pan	Included
Side Load Door	Left
Rear Heat Shield	Included
Actual Weight	520 lbs.
Alcove Certified	Yes
Mobile Home Certified	Yes

ACCESSORIES

Convection Blower	93-57600
Close Clearance Heat Shield	93-68600
Outside Air Adapter	93-53500

* Non-door side -or- locked side door

Manchester Wood Stove



MANCHESTER MODEL 8361 BARN RED ENAMEL WITH LEFT SIDE DOOR



FINISH OPTIONS:



Matte Black



Brown Majolica Enamel

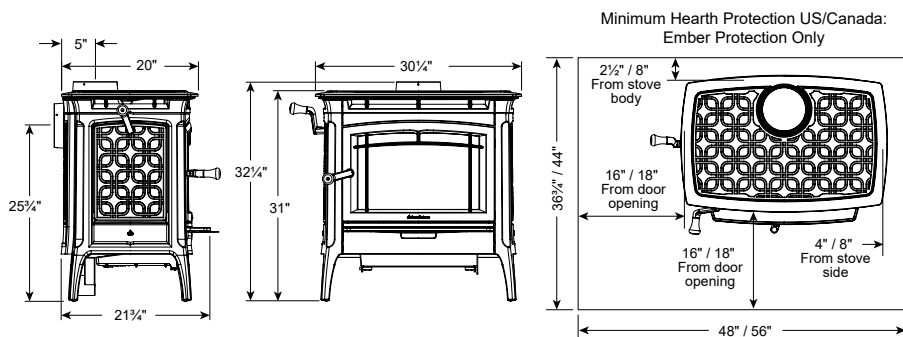


Barn Red Enamel

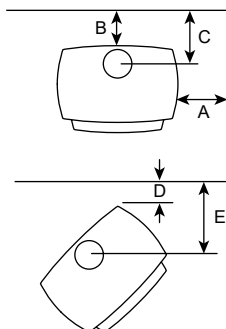


Decorative cast rear heat shield

Side load door



CLEARANCE TO COMBUSTIBLE MATERIALS



	Single-wall connector pipe, no close-clearance heat shield	Double-wall connector pipe, with close-clearance heat shield
A	18"	16" *
B	20"	9"
C	26"	14"
D	11"	9" *
E	23 3/4"	21 1/4" *

MANCHESTER

Model 8361

- **Soapstone-Lined Interior**
Extended HeatLife
- **Right Or Left Side Door**
Flexible Installation
- **Oven-Style Side Door**
Helps keep ashes in firebox
- **Convection Air Channel With Heat Exchanger**
Pulls more heat out of the stove and into your home
- **Decorative Cast Rear Heat Shield**
Finished look from any angle
- **Top Or Rear Flue Exit**
Flexible installation
- **Single Lever Stove Control**
Easy operation, consistent performance
- **Secondary Burn Combustion System**
Clean burning, efficient, reduces creosote build-up
- **Ash Pan**
Easy to clean, easily accessible

SPECIFICATIONS

Heats up to	2,400 sq ft
Firebox Capacity	2.9 cu ft
BTU	Up to 78,000
EPA Certified	2.1 g/hr
Efficiency	77% LHV, 71% HHV
Burn Time	Up to 10 hours
HeatLife	Up to 13 hours
Maximum Log Length	24"
Flue Exit & Diameter	Top or Rear - 6"
Ash Pan	Included
Side Load Door	Choose Left or Right
Rear Heat Shield	Included
Actual Weight	515 lbs.
Alcove Certified	Yes
Mobile Home Certified	Yes

ACCESSORIES

Convection Blower	93-57600
Close Clearance Heat Shield	93-68600
Outside Air Adapter	93-53500
Spark Screen	93-69600

* Non-door side -or- locked side door

Shelburne Wood Stove



SHELburne MODEL 8371 MATTE BLACK



FINISH OPTIONS:



Matte Black



Brown Majolica Enamel



Basil Majolica Enamel



Shelburne featured with Basil Majolica Enamel finish.

SHELBURNE

Model 8371

- **Soapstone-Lined Firebox**
Soapstone interior panels hold heat to extend the HeatLife of the stove
- **Reversible Top Or Rear Flue**
Flexible installation (freestanding or hearthmount)
- **Single Lever Stove Control**
Easy operation, consistent performance
- **Secondary Burn Combustion System**
Clean burning, efficient, reduces creosote build-up
- **Ash Pan**
Easy to clean, easily accessible

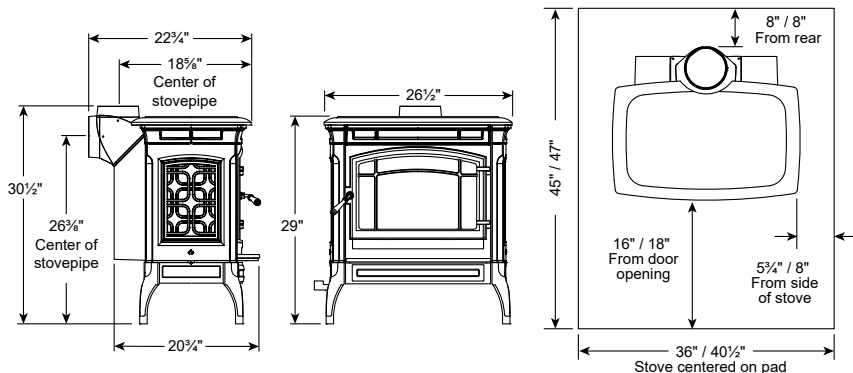
SPECIFICATIONS

Heats up to.....	1,800 sq ft
Firebox Capacity.....	2.0 cu ft
BTU.....	Up to 50,000
EPA Certified.....	2.1 g/hr
Efficiency.....	76% LHV, 70% HHV
Burn Time.....	Up to 8 hours
HeatLife.....	Up to 10 hours
Maximum Log Length.....	20"
Flue Exit & Diameter.....	Top or Rear - 6"
Ash Pan.....	Included
Actual Weight.....	400 lbs.
Alcove Certified.....	Yes
Mobile Home Certified.....	Yes

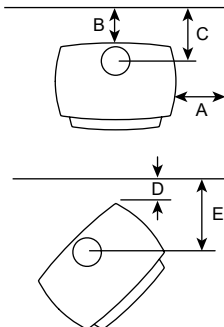
ACCESSORIES

Convection Blower.....	90-57000
Rear Heat Shield.....	93-68700
Outside Air Adapter.....	93-53700

Minimum Hearth Protection US/Canada:
Thermal Protection: R-value 0.8

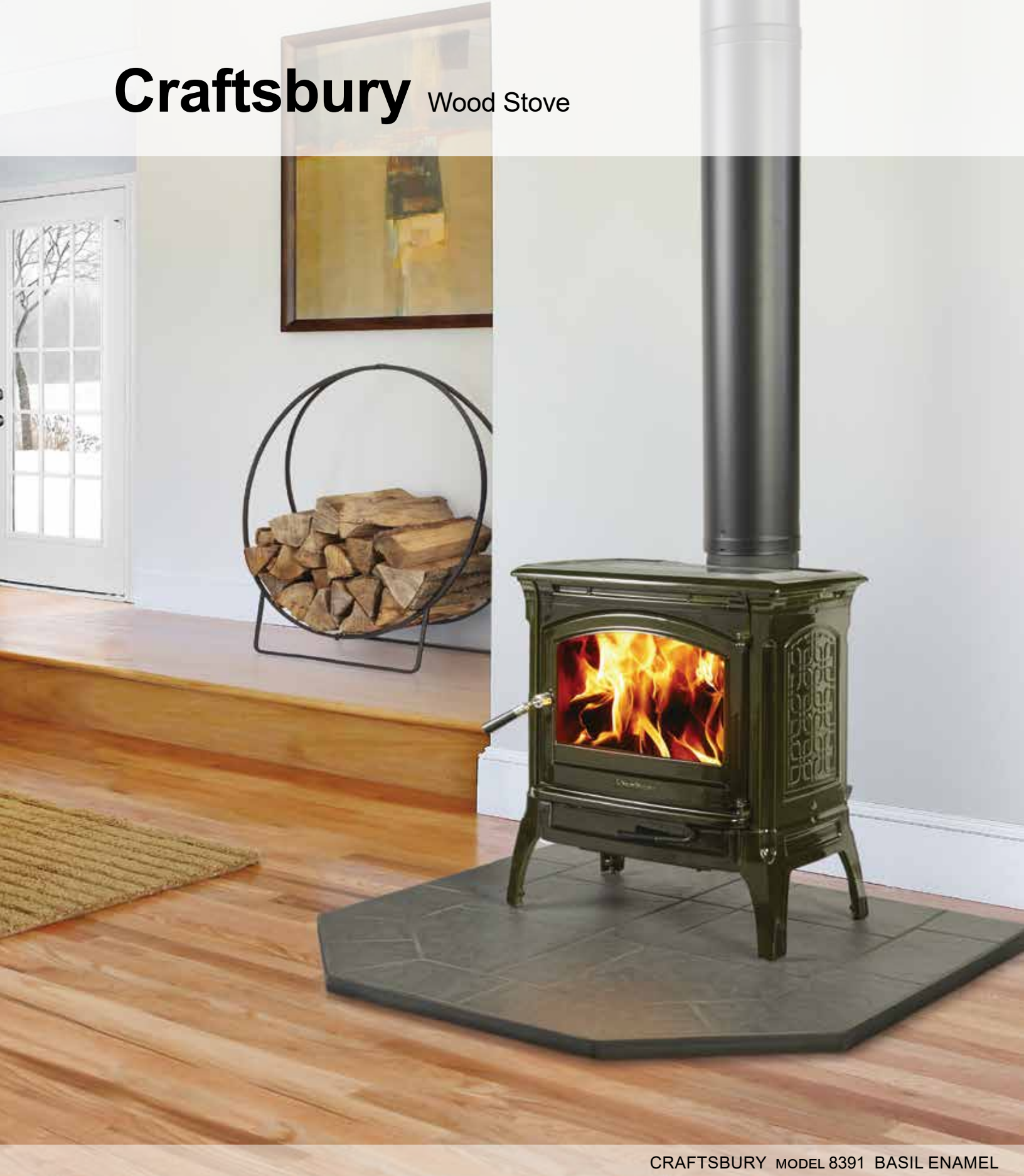


CLEARANCE TO COMBUSTIBLE MATERIALS



	Single-wall connector pipe, no rear heat shield	Double-wall connector pipe, with rear heat shield
A	18"	21"
B	24"	12"
C	27 1/2"	15 1/2"
D	13"	6"
E	20"	13"

Craftsbury Wood Stove



CRAFTSBURY MODEL 8391 BASIL ENAMEL



Craftsbury featured with Brown Majolica Enamel finish.

FINISH OPTIONS:



Matte Black



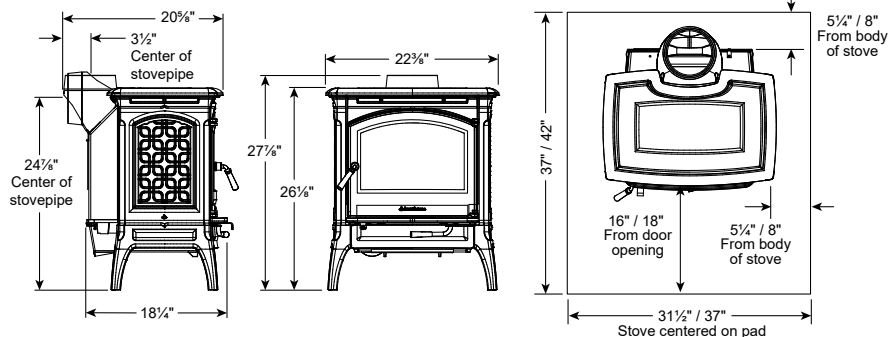
Brown Majolica Enamel



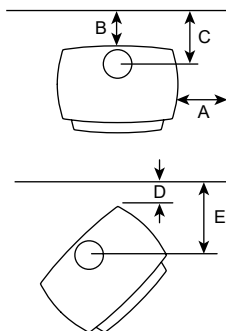
Basil Enamel



Minimum Hearth Protection US/Canada:
Ember Protection Only



CLEARANCE TO COMBUSTIBLE MATERIALS



	Single-wall connector pipe, no rear heat shield	Double-wall connector pipe, with rear heat shield
A	14"	14"
B	18"	6"
C	21"	9"
D	17"	10"
E	22 1/2"	15"

CRAFTSBURY

Model 8391

- **Soapstone-Lined Firebox**
Soapstone interior panels hold heat to extend the HeatLife of the stove
- **Reversible Top Or Rear Flue**
Flexible installation (freestanding or hearth-mount)
- **Single Lever Stove Control**
Easy operation, consistent performance
- **Secondary Burn Combustion System**
Clean burning, efficient, reduces creosote build-up
- **Ash Pan**
Easy to clean, easily accessible

SPECIFICATIONS

Heats up to	1,300 sq ft
Firebox Capacity	1.5 cu ft
BTU	Up to 40,000
EPA Certified	3.8 g/hr
Efficiency	80% LHV, 74% HHV
Burn Time	Up to 6 hours
HeatLife	Up to 7 hours
Maximum Log Length	17 1/2"
Flue Diameter	Top or Rear - 6"
Ash Pan	Included
Actual Weight	285 lbs.
Alcove Certified	Yes
Mobile Home Certified	Yes

ACCESSORIES

Convection Blower	90-57000
Rear Heat Shield	93-68900
Outside Air Adapter	90-53210
Spark Screen	93-69900

Clydesdale

Wood Fireplace Insert



CLYDESDALE MODEL 8491 BROWN MAJOLICA ENAMEL



FINISH OPTIONS:



Matte Black

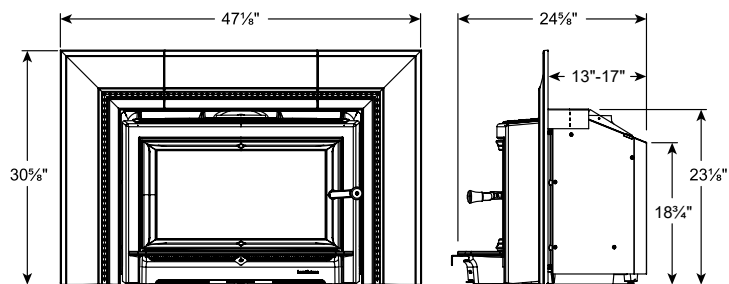
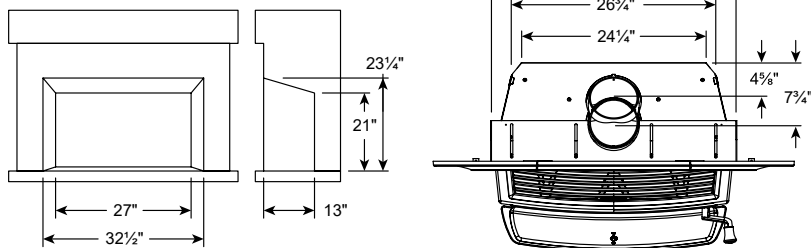


Brown Majolica Enamel

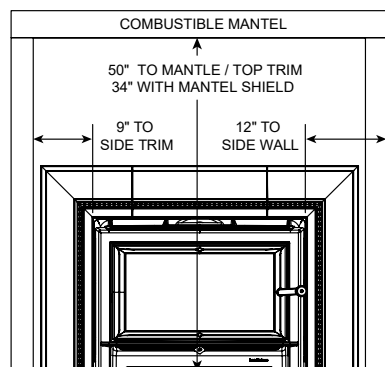
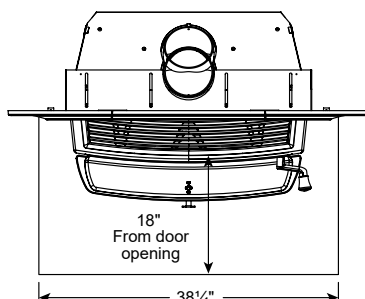
Clydesdale featured
in Matte Black with
surround base caps.



Minimum Fireplace Opening:



CLEARANCE TO COMBUSTIBLE MATERIALS

Minimum Hearth Protection:
Thermal Protection: R-value 1.0

CLYDESDALE

Model 8491

- **Soapstone-Lined Firebox**
Extended HeatLife
- **Large Front Door**
Easy loading and great view of the fire
- **Cast Iron Firebox**
Unequalled durability and maximum heat output
- **Smooth Firebox Floor**
User friendly ash removal
- **Telescoping Design**
Depth of the insert can be adjusted to the depth of your hearth
- **Single Lever Stove Control**
Easy operation, consistent performance
- **Secondary Burn Combustion System**
Clean burning, efficient, reduces creosote build-up

SPECIFICATIONS

Heats up to.....	2,000 sq ft
Firebox Capacity.....	2.4 cu ft
BTU.....	Up to 75,000
EPA Certified.....	3.2 g/hr
Efficiency.....	77% LHV, 72% HHV
Burn Time.....	Up to 10 hours
HeatLife.....	Up to 12 hours
Maximum Log Length.....	22"-24"
Flue Exit & Diameter.....	6", 2 positions
Convection Blower.....	Included
Actual Weight.....	550 lbs.

ACCESSORIES

Spark Screen.....	94-69900
Surround Extension.....	94-5990010
Surround Base Caps, Matte Black.....	94-5970610
Surround Base Caps, Brown Enamel.....	94-5970620
Mantel Shield.....	94-79700
Spark Screen.....	94-69900

Green Mountain Insert 70 Wood Fireplace Insert



GREEN MOUNTAIN INSERT 70 MODEL 8450 MATTE BLACK

FINISH OPTIONS:



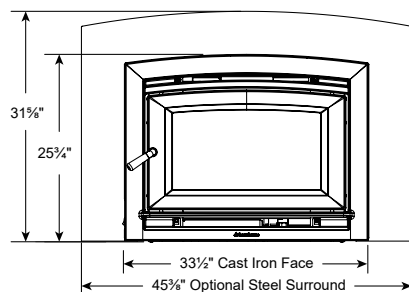
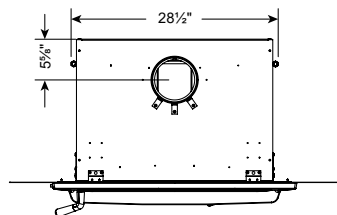
Matte Black



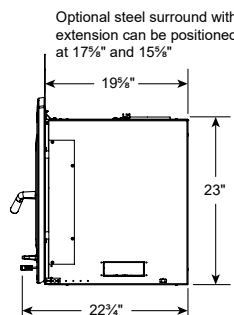
Brown Majolica Enamel



Green Mountain Insert 70 featured in Brown Majolica Enamel with steel surround.

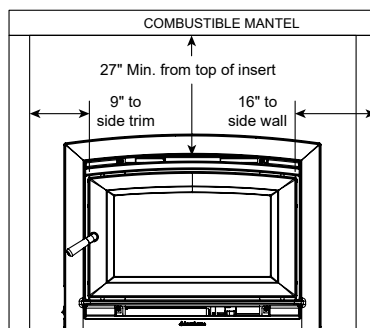
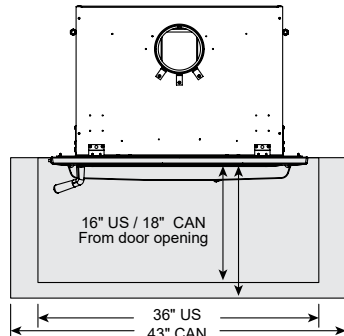


Shown with the optional steel surround



CLEARANCE TO COMBUSTIBLE MATERIALS

Minimum Hearth Protection:
Masonry hearths 5" or higher: Ember Protection Only
Hearths less than 5" tall:
Thermal Protection Required, R-value 1.0



GREEN MOUNTAIN INSERT 70 MODEL 8450

2020 READY

- **Meets 2020 EPA Clean Air Standards**
Clean burning and efficient
- **Cast Iron Faceplate and Door**
Unequaled durability and style, optional brown majolica enamel finish
- **Durable Construction**
Full cast iron construction with 1 1/4" soapstone lining offers lasting heat and a lifetime of trouble free service
- **Thermostat Controlled Fans**
Turn on and off automatically
- **Single Lever Air Control**
Easy operation, efficient performance

SPECIFICATIONS

Efficiency	69% HHV
HeatLife™	Up to 10 hrs**
2020 EPA Certified	1.54 g/hr
Heats up to	2,000 sq ft
Firebox Capacity.....	2.4 cu ft
BTU	Up to 75,000*
Maximum Log Length.....	20"
Flue Exit & Diameter.....	Top - 6"
Ash Pan.....	n/a
Type of Chimney.....	Refer to manual
Convection Blower.....	Included (90 CFM)
Actual Weight	428 lbs. (with facade)

ACCESSORIES

Steel Surround	94-5950110
Surround Lower Panel	94-5950510
Surround Extension	94-5950010
Outside Air Adapter Kit.....	94-53500
Fire Screen Insert.....	94-69500

* Based on burning dry cord wood.
Overall heat output rate: 14,800 to 28,600 BTU/hr

WFP-100 Montgomery Wood Fireplace



WFP-100 WITH MONTGOMERY FACADE MODEL 8420 BROWN MAJOLICA ENAMEL



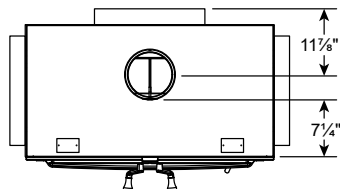
FINISH OPTIONS:



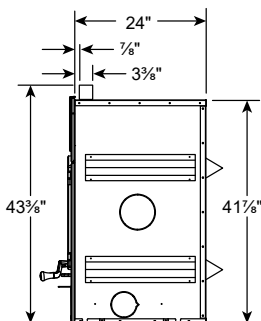
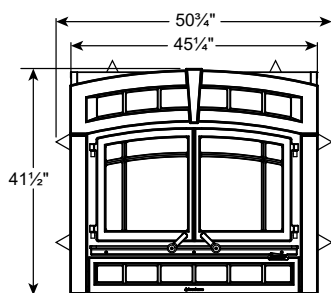
Matte Black



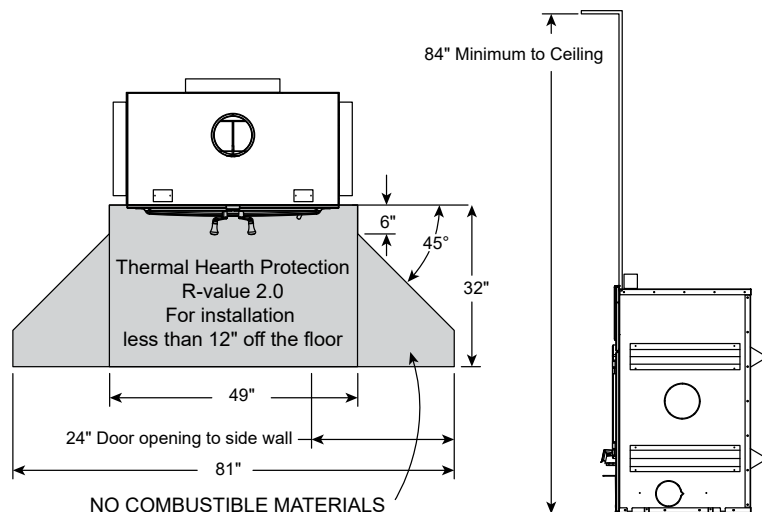
Brown Majolica Enamel



REFER TO THE OWNER'S MANUAL
FOR FRAMING DIMENSIONS.



CLEARANCE TO COMBUSTIBLE MATERIALS



WFP-100 MONTGOMERY

Model 8420

2020 READY

- **Meets 2020 EPA Clean Air Standards**
Clean burning and efficient
- **Stacked LedgeStone Interior Panel**
Accentuate the chiseled stone appearance of the cast iron front
- **Optional Vent Ducting**
Distribute heat to other rooms
- **Thermostat Controlled Fans**
Turn on and off automatically
- **Simple Stove Control**
Easy operation, efficient performance
- **Secondary Burn Combustion System**
Clean burning, efficient, reduces creosote build-up

SPECIFICATIONS

Efficiency	64% HHV
HeatLife™	Up to 10 hrs**
2020 EPA Certified	1.6 g/hr
Heats up to	2,800 sq ft
Firebox Capacity	4.28 cu ft
BTU	Up to 95,000*
Maximum Log Length	25"
Flue Exit & Diameter	Top - 8"
Type of Chimney	Refer to owner's manual
Convection Blower	Included (up to 176 CFM)
Actual Weight	810 lbs. (with facade)

* Based on burning dry cordwood.
Overall heat output rate: 16,610 to 43,021 BTU/hr

ACCESSORIES

Gravity Circulation Louver.....	94-99200
Forced Air Convection Kit (6").....	94-57200

WFP-75 Montgomery Wood Fireplace



WFP-75 WITH MONTGOMERY FACADE MODEL 8410 BROWN MAJOLICA ENAMEL



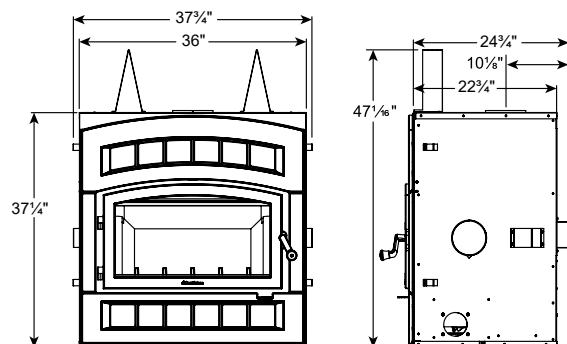
FINISH OPTIONS:



Matte Black

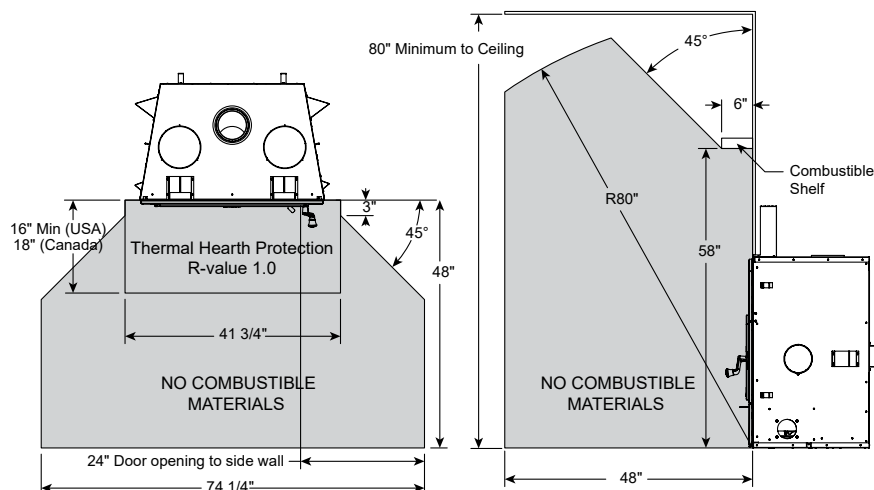


Brown Majolica Enamel



REFER TO THE
OWNER'S MANUAL
FOR FRAMING
DIMENSIONS.

CLEARANCE TO COMBUSTIBLE MATERIALS



WFP-75 MONTGOMERY

Model 8410

- **EPA Certified Zero Clearance Fireplace**
Clean burning, efficient
- **Stacked LedgeStone Interior Panel**
Accentuate the chiseled stone appearance of the cast iron front
- **Optional Vent Ducting**
Distribute heat to other rooms
- **Thermostat Controlled Fans**
Turn on and off automatically
- **Single Lever Stove Control**
Easy operation, consistent performance
- **Secondary Burn Combustion System**
Clean burning, efficient, reduces creosote build-up

SPECIFICATIONS

Heats up to.....	2,000 sq ft
Firebox Capacity	2.5 cu ft *
BTU	Up to 75,000**
EPA Certified	4.4 g/hr
Efficiency	60% LHV, 55% HHV
Burn Time	Up to 9 hours
Maximum Log Length	20"
Flue Exit & Diameter	Top - 6" (7" Optional)
Type of Chimney	Refer to owner's manual
Convection Blower	Included
Actual Weight	400 lbs.

* Maximum firebox capacity, 1.7 cu ft behind the andiron

** BTU input value shown. Output: 8,000 to 40,000 BTUs

ACCESSORIES

Spark Screen	94-69100
Gravity Convection Air Kit	94-99100
Forced Air Convection Kit	94-57100

hase **Bari** Wood Stove

European Design

Hase products are designed and manufactured exclusively in Germany. They are made available in North America only through HearthStone.

As Hase puts it: Above all, the goal is to create a stove with a balanced and harmonious shape and form. Our stoves truly shine and make a beautiful impression in rooms with minimal furnishings, well-chosen furniture, and clean, streamlined designs.

BARI MODEL 8170 SILVER GRAY + SOAPSTONE



Bari stove featured in Charcoal/Lava.

FINISH OPTIONS:



Silver Grey



Charcoal

PANEL OPTIONS:



Soapstone

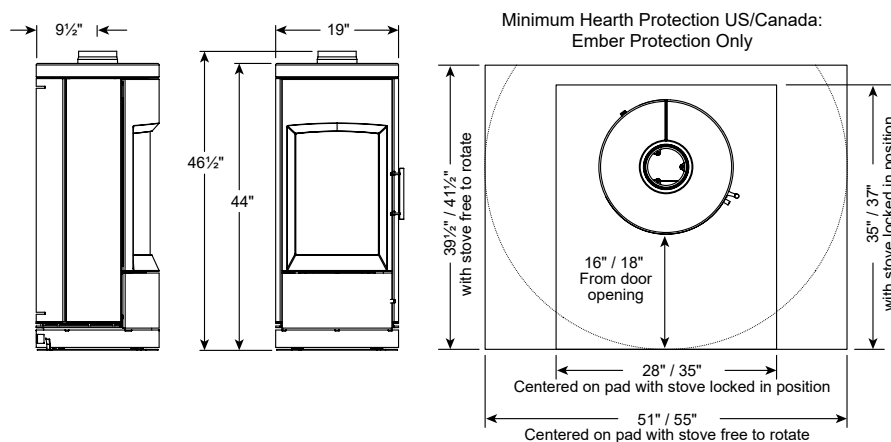


Charcoal

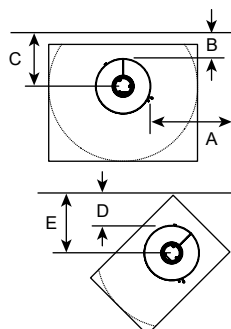
Choose the stove color and panel set that best compliments your home.



Additional finish options are available by special order. Inquire with your dealer or visit www.hase.de



CLEARANCE TO COMBUSTIBLE MATERIALS



	Single-wall connector pipe	Double-wall connector pipe
A	38"	38"
B	17" *	17" *
C	26 1/2" *	26 1/2" *
D	12" **	12" **
E	21 1/2" **	21 1/2" **

hase

BARI

Model 8170

- **Rotating Design Maximizes Convenience**
View flames from around the room
- **Soapstone Or Ceramic Tiles**
Store and radiate heat
- **Multiple Color Options**
Special order for personalization
- **Generous Firebox**
Burn 17" logs vertically
- **Double Steel Wall Construction**
Reduced clearances, encourages airflow, moves heat throughout home
- **Secondary Burn Combustion System**
Clean burning, efficient, reduces creosote build-up
- **Ash Pan**
Easy to clean, easily accessible

SPECIFICATIONS

Heats up to	1,400 sq ft
Firebox Capacity	1.4 cu ft
BTU	Up to 35,000
EPA Certified	3.6 g/hr
Efficiency	82% LHV, 76% HHV
Burn Time	Up to 6 hours
Maximum Log Length	17"
Flue Exit & Diameter	Top - 6"
Ash Pan	Included
Rear Heat Shield	Integral
Rotation	180°
Actual Weight	475 lbs
Alcove Certified	Yes
Mobile Home Certified	Yes

ACCESSORIES

Outside Air Adaptor	91-53700
Mobile Home Anchor	91-99400

* Stove free to rotate, ** Stove locked in position

hase **Tula** Wood Stove



TULA MODEL 8191 CHARCOAL + SOAPSTONE



Tula in Charcoal + Soapstone,
with heat storage kit installed

Tula with the optional Charcoal
steel panel set

FINISH OPTIONS:



Charcoal

PANEL OPTIONS:



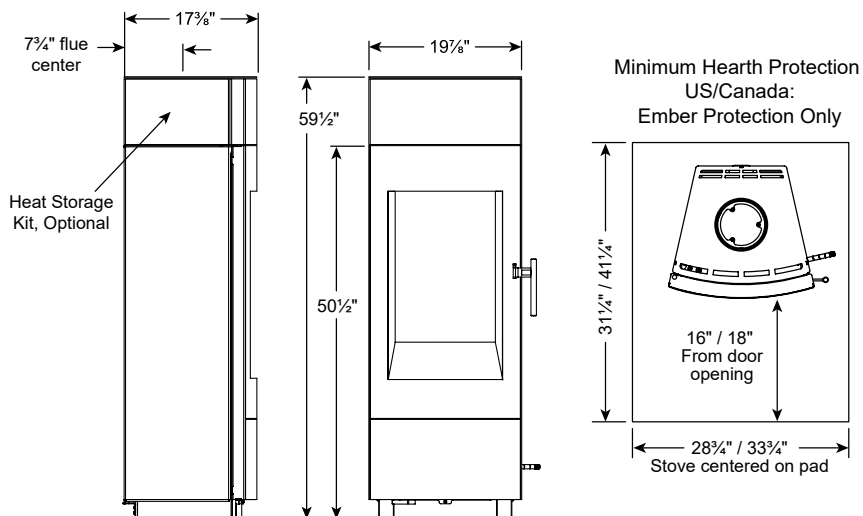
Soapstone
(Ships with the stove)



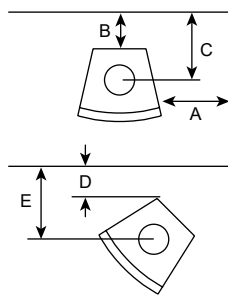
Charcoal
(Optional accessory)



The heat storage kit includes the stove extension,
heat storage bricks and pipe extension



CLEARANCE TO COMBUSTIBLE MATERIALS



	Single-wall connector pipe, no rear heat shield	Double-wall connector pipe, with rear heat shield
A	15"	15"
B	12"	7"
C	20 1/2"	14 1/2"
D	11"	11"
E	20 1/2"	20 1/2"

hase

TULA Model 8191

- **Ultra High Efficiency**
Reduces heating costs
- **Generous Firebox**
Burn 17" logs vertically
- **Double Steel Wall Construction**
Reduced clearances, encourages airflow, moves heat throughout home
- **Secondary Burn Combustion System**
Clean burning, efficient, reduces creosote build-up
- **Ash Pan**
Easy to clean, easily accessible

SPECIFICATIONS

Heats up to	1,400 sq ft
Firebox Capacity	1.4 cu ft
BTU	Up to 35,000
EPA Certified	2.6 g/hr
Efficiency	78% LHV, 72% HHV
Burn Time	Up to 6 hours
Maximum Log Length	17"
Flue Exit & Diameter	Top - 6"
Ash Pan	Included
Rear Heat Shield	Integral
Outside Air Adaptor	Optional
Actual Weight	291 lbs
Alcove Certified	Yes
Mobile Home Certified	Yes

ACCESSORIES

Outside Air Adaptor	91-53900
Mobile Home Anchor	91-99900
Heat Storage Kit	91-98900
Steel Panel Set	91-8291012

Deva

Wood Cook Stove

Wood Fire Cooking

Old world meets new world.

Wood fire cooking isn't just for hunting cabins and camping. The Deva wood fired cooks stove is designed to regulate the temperature of its spacious oven for baking breads, roasts, casseroles and more. The glass cook top is heated by the wood firebox below.

The Deva is a full service range powered by wood.

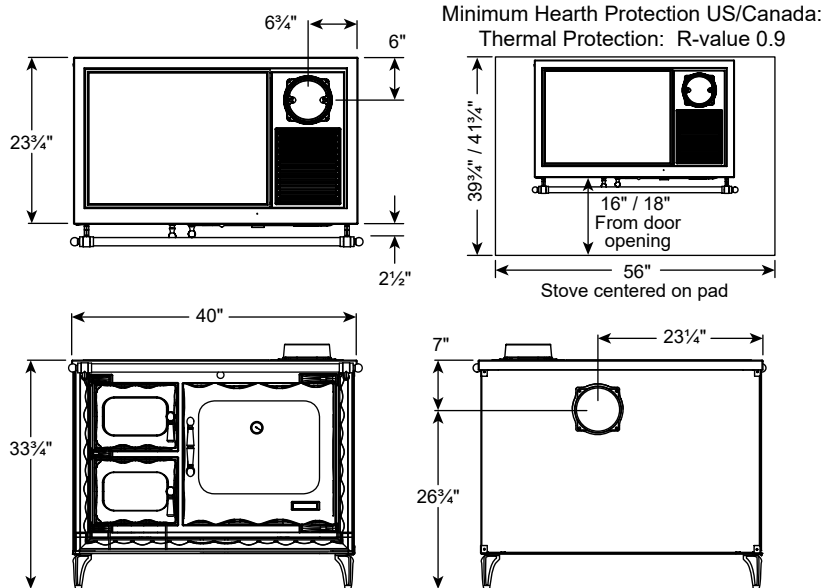
DEVA MODEL 8220 BLACK ENAMEL



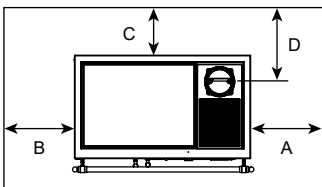
FINISH OPTIONS:



Black Enamel



CLEARANCE TO COMBUSTIBLE MATERIALS



	Single wall connector		Double wall connector	
	Top Exit	Rear Exit	Top Exit	Rear Exit
A	10"	4"	4"	4"
B	10"	4"	4"	4"
C	16"	16"	14"	16"
D	21 1/2"	N/A	19 1/2"	N/A

DEVA Model 8220

- **Ample Oven (17.25" W x 15"H x 17" D)**
Large enough to cook a 20 pound turkey
- **Large Window**
Easy to monitor cooking
- **Vitreoceramic Cook Top**
Easy to clean, efficient heat transfer
- **Oven Temperature Control**
Simple operation, easy to control, consistent heat for baking
- **Centrally Located Thermometer**
Easy visibility, precise temperature control
- **Single Lever Stove Control**
Easy operation, consistent performance

SPECIFICATIONS

Firebox Capacity	1.6 cu ft
BTU	Up to 46,000
EPA Rating	Exempt
Maximum Log Length	17"
Flue Exit & Diameter	Top or Rear - 6"
Oven Capacity	2.5 cu ft
Ash Pan	Included
Actual Weight	484 lbs

The Convenience of Gas

Enjoy the warmth and the flickering ambiance of a burning fire that lights with the push of a button. Simply adjust the fire using the remote control to keep your home cozy and comfortable.

Gas stoves offer a convenient, on-demand comfort.



A Superior Product Often Copied, Never Duplicated

Beautiful designs, careful craftsmanship, and reliable technology.

The quality of our products is displayed in the intricate details of the cast iron and the warm, flickering glow of the fire.

With a range of models and colors to choose from, HearthStone has a freestanding gas stove that will compliment any home.



True Efficiency

Keep the heat in your home.

We all know that gas is a clean source of heat. To truly achieve efficiency, we want to keep the heat from the fire inside your home, not up the chimney.

All HearthStone gas stoves incorporate a cast iron heat exchanger. Air from your room flows through the heat exchanger to pull more heat from your stove and into your home.



Seamless Safety

Our protective screens are seamlessly integrated into each stove. They complete the design of the stove and disappear when the fire is burning.

...by far the best safety solution on the market.



Waitsfield DX DV Gas Stove



WAITSFIELD DX MODEL 8770 BROWN MAJOLICA ENAMEL



FINISH OPTIONS:



Matte Black



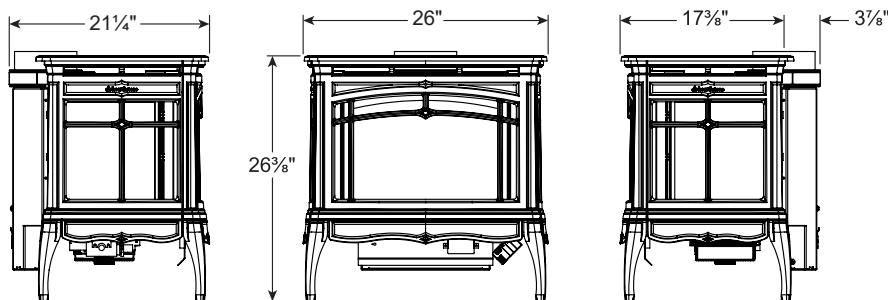
Brown Majolica Enamel



Basil Enamel



Barn Red Enamel



CLEARANCES

Rear.....	2" (51mm)
Side.....	16" (407mm)
Corner.....	11" (280mm)

Floor Protection: Non-combustible surface or wood floor

Refer to Owner's Manual for exact specifications prior to installation.

WAITSFIELD DX

Model 8770

- **3-sided viewing**
Provides warmth and ambiance throughout the room
- **Reflective glass interior**
Magnifies the glow and depth of the fire
- **Child-safe certified glass barriers**
Ensures safety within your home
- **Remote Control**
Offers flame adjustment, blower speed adjustment, thermostatic mode, programmable timer
- **Cast iron heat exchanger**
Maximizes heat output and efficiency
- **Integrated 110 CFM convection blower**
Circulates warm air quietly
- **Ceramic logs and burner**
Simulates a realistic wood fire
- **2-Stage burner**
Offers a wide range of heat output
- **Efficient on-demand pilot**
Conserves energy in warm weather, provides reliability in cold weather
- **Secure battery power**
Operates the stove during a power outage (Requires 110V for blower)
- **Direct-Vent technology**
Draws combustion air from outside to reduce drafts and maintain indoor air quality

SPECIFICATIONS

Heats up to.....	1,800 sq ft
Steady State Efficiency.....	77.4%
P.4.1.09 Fireplace Efficiency.....	70.0%
Burn Rate Range NG.....	18,000-37,000 BTUs/hr
Burn Rate Range LP.....	16,000-37,000 BTUs/hr
Venting.....	Top, 4" x 6-5/8" DV
Ignition System.....	Maxitrol GV60
Burner.....	2-Stage Ceramic Burner
Convection Blower.....	Included
Remote Control.....	Included
Safety Barrier Screens.....	Included
LP Conversion Kit.....	Included
Mobile Home Certified.....	Yes
Weight.....	200 lbs.

ACCESSORIES

Wall Touch Pad.....	7000-260
---------------------	----------

Bristol DX

DV Gas Stove



BRISTOL DX MODEL 8763 BASIL MAJOLICA ENAMEL



FINISH OPTIONS:



Matte Black



Brown Majolica Enamel



Basil Enamel



BRISTOL DX

Model 8763

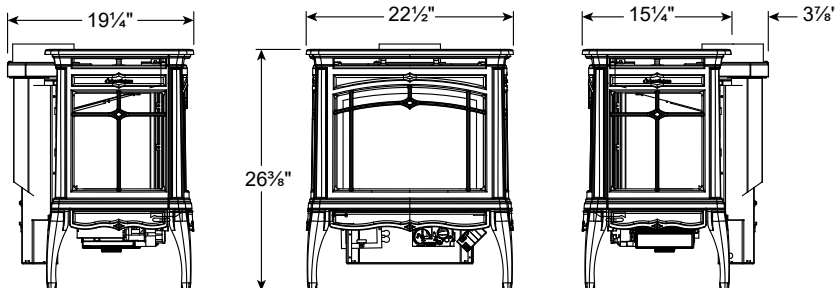
- **3-sided viewing**
Provides warmth and ambiance throughout the room
- **Child-safe certified glass barriers**
Ensures safety within your home
- **Remote Control**
Offers flame adjustment, blower speed adjustment, thermostatic mode, programmable timer
- **Cast iron heat exchanger**
Maximizes heat output and efficiency
- **Integrated 110 CFM convection blower**
Circulates warm air quietly
- **Ceramic logs and burner**
Simulates a realistic wood fire
- **Efficient on-demand pilot**
Conserves energy in warm weather, provides reliability in cold weather
- **Secure battery power**
Operates the stove during a power outage (Requires 110V for blower)
- **Direct-Vent technology**
Draws combustion air from outside to reduce drafts and maintain indoor air quality

SPECIFICATIONS

Heats up to	1,400 sq ft
Steady State Efficiency	73.2%
P.4.1.09 Fireplace Efficiency	68.2%
Burn Rate Range NG	18,000-26,000 BTUs/hr
Burn Rate Range LP	16,000-26,000 BTUs/hr
Venting	Top, 4" x 6-5/8" DV
Ignition System	Maxitrol GV60
Burner	Ceramic Burner
Convection Blower	Included
Remote Control	Included
Safety Barrier Screens	Included
LP Conversion Kit	Included
Mobile Home Certified	Yes
Weight	170 lbs.

ACCESSORIES

Wall Touch Pad	7000-260
----------------------	----------



CLEARANCES

Rear	2" (51mm)
Side	10" (254mm)
Corner	4" (102mm)

Floor Protection: Non-combustible surface or wood floor

Refer to Owner's Manual for exact specifications prior to installation.

Champlain DV Gas Stove



CHAMPLAIN MODEL 8302 BROWN MAJOLICA ENAMEL

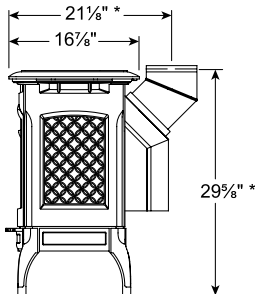
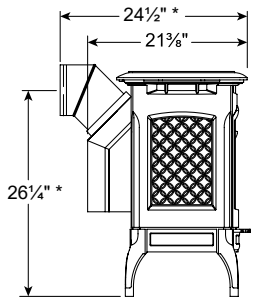
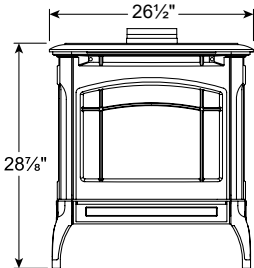
FINISH OPTIONS:



Matte Black



Brown Majolica Enamel



*Shown with 45° elbow venting.
Dimensions may vary depending on
venting manufacturer.

CLEARANCES

- Rear.....3" (77mm)
- Side2" (51mm)
- Side, snorkel termination ...4" (102mm)
- Floor Protection:
Non-combustible surface or wood floor

CHAMPLAIN

Model 8303

STANDING PILOT

- **Child-safe certified glass barriers**
Ensures safety within your home
- **Cast iron heat exchanger**
Maximizes heat output and efficiency
- **Thermostatic remote control (optional)**
On / Off thermostatic mode
- **Ceramic logs**
Simulates a realistic wood fire
- **Convenient standing pilot**
Quick and reliable starts all year round
- **Optional 150 CFM convection blower**
Circulates warm air quietly, temperature activated on/off, manual rheostat control
- **Direct-Vent technology**
Draws combustion air from outside to reduce drafts and maintain indoor air quality

SPECIFICATIONS

Heats up to.....	1,800 sq ft
Steady State Efficiency	74.6%
P.4.1.09 Fireplace Efficiency.....	67.9%
Burn Rate Range NG.....	21,000-35,000 BTUs/hr
Burn Rate Range LP.....	21,000-35,000 BTUs/hr
Venting	45°, 4" x 6-5/8" DV
Ignition System.....	SIT Nova
Burner.....	Pan Burner
Thermostatic Remote Control	Optional
Safety Barrier Screens.....	Included
LP Conversion Kit	Included
Mobile Home Certified	Yes
Weight	220 lbs.

ACCESSORIES

Convection Blower	93-57020
Thermostatic Remote Control Kit.....	90-56914

CHAMPLAIN

Model 8302

ON-DEMAND PILOT

- **Child-safe certified glass barriers**
Ensures safety within your home
- **Cast iron heat exchanger**
Maximizes heat output and efficiency
- **Remote Control**
Offers flame adjustment, thermostatic mode, programmable timer
- **Ceramic logs**
Simulates a realistic wood fire
- **Efficient on-demand pilot**
Conserves energy in warm weather, provides reliability in cold weather
- **Optional 150 CFM convection blower**
Circulates warm air quietly, temperature activated on/off, manual rheostat control
- **Secure battery power**
Operates the stove during a power outage (Requires 110V for optional blower)
- **Direct-Vent technology**
Draws combustion air from outside to reduce drafts and maintain indoor air quality

SPECIFICATIONS

Heats up to.....	1,800 sq ft
Steady State Efficiency	74.6%
P.4.1.09 Fireplace Efficiency.....	67.9%
Burn Rate Range NG.....	21,000-35,000 BTUs/hr
Burn Rate Range LP.....	23,000-35,000 BTUs/hr
Venting	45°, 4" x 6-5/8" DV
Ignition System.....	Maxitrol GV60
Burner.....	Pan Burner
Remote Control.....	Included
Safety Barrier Screens.....	Included
LP Conversion Kit	Included
Mobile Home Certified	Yes
Weight	220 lbs.

ACCESSORIES

Convection Blower	93-57020
Wall Touch Pad	7000-260
A/C Adaptor.....	7000-070

Refer to Owner's Manual for exact specifications prior to installation.

Stowe DV Gas Stove



STOWE MODEL 8323 OYSTER ENAMEL

FINISH OPTIONS:



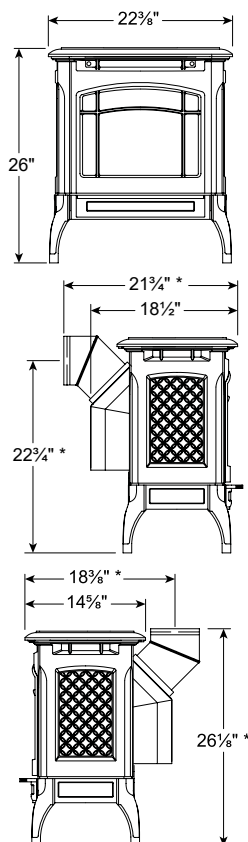
Matte Black



Brown Majolica Enamel



Oyster Enamel



*Shown with 45° elbow venting.
Dimensions may vary depending on
venting manufacturer.

CLEARANCES

Rear.....3" (77mm)
Side.....4" (102mm)*
*6" with side walls deeper than 18"
Corner.....4" (102mm)
Floor Protection:
Non-combustible surface or wood floor

STOWE Model 8324 STANDING PILOT

- **Child-safe certified glass barriers**
Ensures safety within your home
- **Cast iron refractory**
Features a traditional brick pattern
- **Cast iron heat exchanger**
Maximizes heat output and efficiency
- **Thermostatic remote control (optional)**
On / Off thermostatic mode
- **Ceramic logs and burner**
Simulates a realistic wood fire
- **Convenient standing pilot**
Quick and reliable starts all year round
- **Optional 150 CFM convection blower**
Circulates warm air quietly, temperature activated on/off, manual rheostat control
- **Direct-Vent technology**
Draws combustion air from outside to reduce drafts and maintain indoor air quality

SPECIFICATIONS

Heats up to.....1,200 sq ft
Steady State Efficiency.....80.1%
P.4.1.09 Fireplace Efficiency.....75.7%
Burn Rate Range NG.....15,000-22,400 BTUs/hr
Burn Rate Range LP.....15,000-22,400 BTUs/hr
Venting.....45°, 4" x 6-5/8" DV
Ignition System.....SIT Nova
Burner.....Ceramic Burner
Thermostatic Remote Control.....Optional
Safety Barrier Screens.....Included
LP Conversion Kit.....Included
Mobile Home Certified.....Yes
Weight.....155 lbs.

ACCESSORIES

Convection Blower.....93-57230
Thermostatic Remote Control Kit.....90-56914

STOWE Model 8323 ON-DEMAND PILOT

- **Child-safe certified glass barriers**
Ensures safety within your home
- **Cast iron refractory**
Features a traditional brick pattern
- **Cast iron heat exchanger**
Maximizes heat output and efficiency
- **Remote Control**
Offers flame adjustment, thermostatic mode, programmable timer
- **Ceramic logs and burner**
Simulates a realistic wood fire
- **Efficient on-demand pilot**
Conserves energy in warm weather, offers reliability in cold weather
- **Optional 150 CFM convection blower**
Circulates warm air quietly, temperature activated on/off, manual rheostat control
- **Secure battery power**
Operates the stove during a power outage (Requires 110V for optional blower)
- **Direct-Vent technology**
Draws combustion air from outside to reduce drafts and maintain indoor air quality

SPECIFICATIONS

Heats up to.....1,200 sq ft
Steady State Efficiency.....80.1%
P.4.1.09 Fireplace Efficiency.....75.7%
Burn Rate Range NG.....13,000-22,400 BTUs/hr
Burn Rate Range LP.....14,000-22,400 BTUs/hr
Venting.....45°, 4" x 6-5/8" DV
Ignition System.....Maxitrol GV60
Burner.....Ceramic Burner
Remote Control.....Included
Safety Barrier Screens.....Included
LP Conversion Kit.....Included
Mobile Home Certified.....Yes
Weight.....155 lbs.

ACCESSORIES

Convection Blower.....93-57230
Wall Touch Pad.....7000-260
A/C Adaptor.....7000-070

Refer to Owner's Manual for exact specifications prior to installation.



Soapstone Steamer 90-99112

Recommended for all wood burning stoves, the steamer adds moisture to the air to help balance the drying effects of a wood fire. Just fill the steamer pot with water and set it on your stove.



Stove Top Thermometer 90-99120

Recommended for soapstone stoves, the stove top thermometer helps you keep your stove burning within the optimal temperature range for safe and efficient heating.



Draft Inducing Flue Collar 90-99099

Recommended for installations with poor draft, the draw collar heats up your chimney to ensure a proper draft. Fits 6" flue.



Draft Meter 90-99000

Recommended for wood stoves installations, the draft meter allows you to measure the draft in your chimney. Proper draft is necessary for clean and efficient wood burning.



Wall touch pad 7000-260

For all gas stoves, the wall touch pad and be installed on a wall to turn your stove on/off and adjust the flame height.



Leather Safety Gloves.....90-99031

Durable and dependable, our leather safety gloves are thick and protective, with a soft inner lining. One size fits all.



Glass Hearth Pad, Circular91-84800

Tempered glass hearth pad provides stylish ember protection.

Diameter: 35½"



Glass Hearth Pad, D-Shaped91-84750

Tempered glass hearth pad provides stylish ember protection.

33½" x 43½"



Glass Hearth Pad, Square91-84400

Tempered glass hearth pad provides stylish ember protection.

39½" x 39½"



Glass Hearth Pad, Semi-Circular.....91-84700

Tempered glass hearth pad provides stylish ember protection.

55" x 43¼"

Specifications: Wood

2020 READY

	EQUINOX		MANSFIELD	HERITAGE TruHybrid™	HERITAGE	
SPECIFICATIONS						
Firebox capacity (1)	4.0 cf		3.2 cf	2.2 cf	2.2 cf	
Maximum log length	25"		21"	21"	21"	
Flue exit & diameter	top or rear – 8"		top – 6"	top or rear – 6"	top or rear – 6"	
Ash pan	included		included	optional	optional	
Convection Blower	optional		optional	optional	optional	
Mobile-home certified	yes		yes	yes	yes	
Alcove certified (2)	yes		yes	yes	yes	
Actual weight (lbs)	689		550	560	550	
Shipping weight (lbs)	774		575	585	575	
PERFORMANCE						
Emissions	3.1 g/hr		2.8 g/hr	0.54 g/hr	2.0 g/hr	
BTUs (3)	120,000		80,000	60,000	60,000	
Efficiency LHV (4)	78%		72%		75%	
Efficiency HHV (4)	72%		67%	77%	70%	
Heating capacity up to (5)	3,500 sq. ft.		2,500 sq. ft.	2,100 sq. ft.	2,000 sq. ft.	
Burn time up to	12 hours		10 hours		8 hours	
HeatLife™ up to (6)	16 hours		14 hours	25+ hours	12 hours	
CLEARANCES (7)						
Side of stove to side wall	S	21" *	18"	16"	17" *	
	D	19" *	18"	16"	15" *	
Back of stove to back wall	S	21"	19"	16"	16"	
	D	6"	8"	6"	7"	
Corner of stove to side wall	S	15" *	14"	8"	12" *	
	D	13½" *	14"	8"	11" *	
Minimum hearth pad size US inches (9)	48" W x 41½" D		34" W x 40" D	47" W x 39" D	47" W x 37 ½" D	
Minimum hearth pad size Canada inches (9)	56" W x 48" D		40½" W x 48" D	50½" x 42"	52½" W x 42" D	
Minimum Hearth Protection	R-value 1.0		Ember Protection	Ember Protection	Ember Protection	

S Single-wall pipe, no heat shield **D** Double-wall pipe, w/ rear heat shield

* Applies to the side/corner opposite the side load door. If the side door lock kit is installed, side/corner clearance applies to both sides/rear corners.

2020 READY

	HOMESTEAD	CASTLETON TruHybrid™	CASTLETON	TRIBUTE
	2.0 cf	1.9 cf	1.9 cf	1.2 cf
	21"	18"	18"	16"
	top or rear – 6"	top or rear – 6"	top or rear – 6"	top – 6"
	included	no	no	no
	optional	optional	optional	optional
	yes	yes	yes	yes
	yes	yes	yes	yes
	360	464	464	318
	440	500	500	358
	1.9 g/hr	0.69 g/hr	2.7 g/hr	3.0 g/hr
	50,000	45,000	45,000	36,000
	73%	83%	78%	80%
	68%	77%	72%	74%
	1,800 sq. ft.	1,700 sq. ft.	1,500 sq. ft.	1,300 sq. ft.
	8 hours	20 hours	8 hours	5 hours
	12 hours	24 hours	10 hours	7 hours
	23"	17"	20"	16 ½"
	16"	17"	15"	16 ½"
	26"	15"	18"	19"
	7"	8"	6"	8"
	18"	8"	10"	17"
	12"	8"	10"	7"
	41" W x 41" D	31½" W x 37" D	31½" W x 36½" D	28⅞" W x 31⅞" D
	41" W x 43" D	41" W x 47" D	37½" W x 44½" D	38" W x 40⅞" D
	Hearthmount 6.6	Ember Protection	Ember Protection	R-value 0.6
	Freestanding 2.5			

Note: Always refer to the HearthStone Owner's Manual and the local authority having jurisdiction in your area for the specific installation requirements for your product.

* Applies to the side/corner opposite the side load door. If the side door lock kit is installed, side/corner clearance applies to both sides/rear corners.

Specifications: Wood

2020 READY

2020 READY

2020 READY

	GREEN MOUNTAIN 80 TruHybrid™		GREEN MOUNTAIN 60 TruHybrid™		GREEN MOUNTAIN 40 TruHybrid™		
SPECIFICATIONS							
Firebox capacity (1)	3.1 cf		2.0 cf		1.32 cf		
Maximum log length	23"		18"		16"		
Flue exit & diameter	top – 8"		top - 6"		top - 6"		
Ash pan	n/a		n/a		n/a		
Convection Blower	optional		optional		optional		
Mobile-home certified	yes		yes		yes		
Alcove certified (2)	yes		yes		yes		
Actual weight (lbs)	550		494		464		
Shipping weight (lbs)	575		520		490		
PERFORMANCE							
Emissions	0.7 g/hr		0.6 g/hr		0.9 g/hr		
BTUs (3)	80,000		60,000		40,000		
Efficiency LHV (4)			86%		84%		
Efficiency HHV (4)	81%		79%		77%		
Heating capacity up to (5)	2,500 sq. ft.		2,000 sq. ft.		1,400 sq. ft.		
Burn time up to			24 hours		16 hours		
HeatLife™ up to (6)	30+ hours		30 hours		20 hours		
CLEARANCES (7)							
Side of stove to side wall	S	13"	13"		13"		
	D	13"	13"		13"		
Back of stove to back wall	S	8"	11"		9"		
	D	5"	5"		7"		
Corner of stove to side wall	S	7"	7"		6"		
	D	7"	7"		6"		
Minimum hearth pad size US inches (9)	41½" W x 40" D		33¼" W x 33½" D		31½" W x 33" D		
Minimum hearth pad size Canada inches (9)	45" W x 50" D		42" W x 43½"		40" W x 43" D		
Minimum Hearth Protection	Ember Protection		Ember Protection		Ember Protection		

S Single-wall pipe, no heat shield **D** Double-wall pipe, w/ rear heat shield

* Applies to the side/corner opposite the side load door. If the side door lock kit is installed, side/corner clearance applies to both sides/rear corners.

2020 READY

	MANCHESTER TruHybrid™	MANCHESTER	SHELBURNE	CRAFTSBURY
	2.45 cf	2.9 cf	2.0 cf	1.5 cf
	24"	24"	20"	17½"
	top or rear – 6"	top or rear – 6"	top or rear – 6"	top or rear – 6"
	included	included	included	included
	optional	optional	optional	optional
	yes	yes	yes	yes
	yes	yes	yes	yes
	520	515	400	285
	555	550	425	315
	0.65 g/hr	2.1 g/hr	2.1 g/hr	3.8 g/hr
	75,000	78,000	50,000	40,000
		77%	76%	80%
	78%	71%	70%	74%
	2,400 sq. ft.	2,400 sq. ft.	1,800 sq. ft.	1,300 sq. ft.
		12 hours	8 hours	6 hours
	30+ hours	14 hours	10 hours	7 hours
	18" *	18" *	18"	14"
	16" * (8)	16" * (8)	21"	14"
	16"	20"	24"	18"
	6" (8)	9" (8)	12"	6"
	9" *	11" *	13"	17"
	9" *	9" *	6"	10"
	48" W x 36¾" D	48" W x 36¾" D	36" W x 45" D	38½" W x 41" D
	56" W x 44" D	56" W x 44" D	40½" W x 47" D	38½" W x 43" D
	Ember Protection	Ember Protection	R-value 0.8	Ember Protection

Note: Always refer to the HearthStone Owner's Manual and the local authority having jurisdiction in your area for the specific installation requirements for your product.

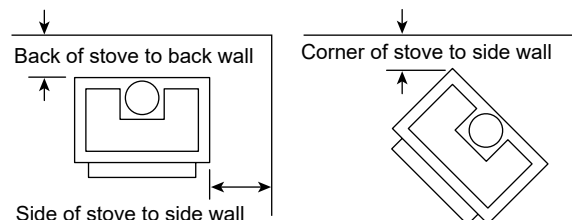
* Applies to the side/corner opposite the side load door. If the side door lock kit is installed, side/corner clearance applies to both sides/rear corners.

Specifications: Wood

2020 READY 2020 READY

	CLYDESDALE	GREEN MOUNTAIN INSERT 70	WFP-100 MONTGOMERY	WFP-75 MONTGOMERY
SPECIFICATIONS				
Firebox capacity (1)	2.4 cu. ft.	2.4 cu. ft.	4.28 cu. ft	2.5 cu. ft
Maximum log length	22"-24"	20"	25"	20"
Flue exit & diameter	top – 6"	Top - 6"	top – 8"	top – 6" (7" optional)
Ash pan	no	no	no	no
Convection Blower	included	included	included	included
Mobile-home certified	no	no	no	no
Alcove certified (2)	no	no	no	no
Actual weight (lbs)	550	428	665	400
Shipping weight (lbs)	585	484	-	-
PERFORMANCE				
Emissions	3.2 g/hr	1.54 g/hr	1.6 g/hr	4.4 g/hr
BTUs (3)	75,000	75,000	95,000	75,000
Efficiency LHV (4)	77%	74%	68%	60%
Efficiency HHV (4)	72%	69%	64%	55%
Heating capacity up to (5)	2,000 sq. ft.	2,000 sq. ft.	2,800 sq. ft.	2,000 sq. ft.
Burn time up to	10 hours		10 hours	9 hours
HeatLife™ up to (6)	12 hours	Up to 10 hours	N/A	N/A
CLEARANCES (7)				
Door opening to side wall	12"	16"	24"	24"
Mantel height	50"	27" from top of insert	N/A	58"
Mantel height w/ shield	34"	N/A	N/A	N/A
Minimum fireplace opening	23¼"H x 32½"W x 13"D	23¾"H x 28¾"W x 19½"D	N/A	N/A
Minimum hearth pad size US inches (9)	38¼" W x 18" D	36" W x 16" D	49 W x 32" D	41¾ W x 16" D
Minimum hearth pad size Canada inches (9)	38¼" W x 18" D	43" W x 18" D	49 W x 32" D	41¾ W x 18" D
Minimum Hearth Protection	R-value 1.0	Hearths less than 5" tall: R-value 1.0	R-value 1.0	R-value 1.0

	BARI		TULA
SPECIFICATIONS			
Firebox capacity (1)	1.4 cu. ft		1.4 cu. ft.
Maximum log length	17"		17"
Flue exit & diameter	top – 6"		top – 6"
Ash pan	included		included
Convection Blower	no		no
Mobile-home certified	yes		yes
Alcove certified (2)	yes		yes
Actual weight (lbs)	475		291
Shipping weight (lbs)	-		-
PERFORMANCE			
Emissions	3.6 g/hr		2.6 g/hr
BTUs (3)	35,000		35,000
Efficiency LHV (4)	82%		78%
Efficiency HHV (4)	76%		72%
Heating capacity up to (5)	1,400 sq. ft.		1,400 sq. ft.
Burn time up to	6 hours		6 hours
HeatLife™ up to (6)	8 hr (soapstone only)		N/A
CLEARANCES (7)			
Side of stove to side wall	S	38"	15"
	D	38"	15"
Back of stove to back wall	S	17" *	12"
	D	17" *	7"
Corner of stove to side wall	S	12" **	11"
	D	12" **	11"
Minimum hearth pad size US inches (9)	51" W x 39½" D		28¾"W x 31¼"D
Minimum hearth pad size Canada inches (9)	55" W x 41½" D		33¾"W x 41¼"D
Minimum Hearth Protection	Ember Protection		Ember Protection



(1) The amount and weight of wood contained per cubic foot of firebox volume can vary from 15 to 36 lbs. per cubic foot depending on type of wood, moisture content, packing density, and other factors. As a constant for comparison and test purposes, we are assuming 20 lbs. of seasoned hardwood per cubic foot of firebox volume.

(2) See Owner's Manual for specific alcove clearances and alcove hearth pad requirements.

(3) Heat output will vary depending on frequency of loading, the dryness and quality of wood used, packing density, and other installation variables.

(4) HearthStone publishes both Lower Heating Value (LHV) and Higher Heating Value (HHV) efficiency numbers. LHV numbers are used by the IRS to qualify products for tax credits. HHV numbers are published by the EPA on the certified stove list. When comparing stoves, make sure you're comparing LHV to LHV or HHV to HHV.

(5) Heating capacity is an approximation dependent upon type of wood, loading configuration, floor plan, ceiling height, house construction, venting configuration, heat loss, geographic location of home, and other usage and regional variables.

(6) HeatLife™ is a trademark of HearthStone Quality Home Heating Products and is defined as the quantity of heat stored within the thermal mass of the stove. Used here, it refers not just to burn time but to total hours of usable heat from a single load of fuel.

(7) Clearances on this page are for reference only. Refer to the Owner's Manual for exact specifications prior to installation.

(8) The Manchester rear heat shield is built in; there is an optional Close Clearance heat shield which may further reduce rear clearances to 9".

(9) See Owner's Manual for specific hearth material and R-value requirements.

Note: Always refer to the HearthStone Owner's Manual and the local authority having jurisdiction in your area for the specific installation requirements for your product.

Warranty: HearthStone warrants all its wood and pellet products to the original purchaser for the lifetime of the appliance to be free from defects in material and workmanship, with certain limitations as defined in our Limited Lifetime Warranty policy. See your HearthStone dealer for complete details and a copy of our warranty policy.

S Single-wall pipe, no heat shield **D** Double-wall pipe, w/ rear heat shield

* Stove free to rotate, ** Stove locked in position

Specifications: Gas

	WAITSFIELD DX 8770	BRISTOL DX 8763	CHAMPLAIN 8302	
SPECIFICATIONS				
Venting	Top, 4" x 6 $\frac{5}{8}$ " DV	Top, 4" x 6 $\frac{5}{8}$ " DV	45°, 4" x 6 $\frac{5}{8}$ " DV	
Venting: Minimum Vertical Rise	36 in. (from top of stove)	24 in. (from top of stove)	24 in. see owner's manual	
Ignition System	Maxitrol GV60 on-demand pilot	Maxitrol GV60 on-demand pilot	Maxitrol GV60 on-demand pilot	
Burner	2-Stage Ceramic	Ceramic	Stainless steel pan	
On-Off Switch	On-Off-Remote	On-Off-Remote	On-Off-Remote	
Remote Control	Included	Included	Included	
Convection Blower 110 CFM	Included	Included	Optional	
Safety Barrier Screens	Included	Included	Included	
LP Conversion Kit *	Included	Included	Included	
Mobile-home certified	Yes	Yes	Yes	
Actual weight (lbs)	200	170	220	
PERFORMANCE				
Heating capacity up to (3)	1,800 sq. ft.	1,400 sq. ft.	1,800 sq. ft.	
Burn Rate Range NG (BTUs/hr)	18,000 to 37,000	18,000 to 26,000	21,000 to 35,000	
Burn Rate Range LP (BTUs/hr)	16,000 to 37,000	16,000 to 26,000	23,000 to 35,000	
Steady State Efficiency (2)	77.4% NG 77.4% LP	73.2% NG 73.2% LP	74.6% NG 74.6% LP	
P.4.1.09 Fireplace Efficiency (1)	70.0% NG / LP	68.2% NG / LP	67.9% NG / LP	
CLEARANCES (4)				
Minimum clearance to combustibles				
Side	16"	10"	2"	
Rear	2"	2"	3"	
Corner	11"	4"	2"	
Hearth Protection	Non-combustible surface or wood floor	Non-combustible surface or wood floor	Non-combustible surface or wood floor	

Note: Always refer to the HearthStone Owner's Manual and the local authority having jurisdiction in your area for the specific installation requirements for your stove.

* All products ship ready to burn natural gas.

	STOWE 8323	CHAMPLAIN 8303	STOWE 8324
	45°, 4" x 6⅝" DV	45°, 4" x 6⅝" DV	45°, 4" x 6⅝" DV
	9 in.	24 in. see owner's manual	9 in.
	Maxitrol GV60 on-demand pilot	SIT Nova standing pilot	SIT Nova standing pilot
	Ceramic	Stainless steel pan	Ceramic
	On-Off-Remote	yes	yes
	Included	no	no
	Optional	Optional	Optional
	Included	Included	Included
	Included	Included	Included
	Yes	Yes	Yes
	155	220	155
	1,200 sq. ft.	1,800 sq. ft.	1,200 sq. ft.
	13,000 to 22,400	21,000 to 35,000	15,000 to 22,400
	14,000 to 22,400	21,000 to 35,000	15,000 to 22,400
	80.1% NG 80.1% LP	74.6% NG 74.6% LP	80.1% NG 80.1% LP
	75.7% NG / LP	67.9% NG / LP	75.7% NG / LP
	4"	2"	4"
	3"	3"	3"
	4"	2"	4"
	Non-combustible surface or wood floor	Non-combustible surface or wood floor	Non-combustible surface or wood floor



(1) P.4.1.09 Fireplace Efficiency informs the Canadian **EnerGuide** rating. **EnerGuide** is a Government of Canada rating system that provides consumers with comparative information on the energy performance of energy-using products sold in Canada.

For more information on the **EnerGuide** Program, please visit the **EnerGuide** Web site: oee.nrcan.gc.ca/equipment

(2) Steady state efficiencies vary dependent upon installation, venting configuration, altitude, gas values, and other installation variables.

(3) Heating capacity is an approximation dependent upon floor plan, ceiling height, house construction, venting configuration, heat loss, and geographic location of home.

(4) All measurements are taken from the closest surface of the unit. Clearances in this catalog are for reference only. Refer to Owner's Manual for exact specifications prior to installation.

HearthStone Quality Home Heating Products, Inc., warrants all its gas products to the original purchaser for the lifetime of the appliance to be free from defects in material and workmanship, with certain limitations as defined in our Limited Lifetime Warranty policy. See your HearthStone dealer for complete details and a copy of our warranty policy.

HearthStone Sterling is a registered trademark of HearthStone Quality Home Heating Products, Inc.



Patio Ovens. Fire Pit Grills.

Make HearthStone the heart of your home both inside and out.

www.hearthstoneoutdoor.com

HearthStone Quality Home Heating Products
317 Stafford Avenue, Morrisville Vermont 05661 USA
Contact us at 877-877-2113, inquiry@hearthstonestoves.com
www.hearthstonestoves.com