



## Gas Log Sets Vented/Vent-Free Burners Vented Burners

White Mountain Hearth Ceramic Fiber Canyon Log Set (LS-24CR) on  
Harmony Burner (VFNI-24) with Decorative Cast Grate (DCG-24-BL).



Scan these  
QR codes with  
your mobile  
device to see  
a video of the  
product burning.



White Mountain Hearth – The Pinnacle of Efficiency



White Mountain Hearth Charred Oak Log Set (LS-24C2) on a Vent-Free Slope Glaze Burner with variable remote control system (VFSV-24). Shown with a 36-inch Breckenridge Deluxe Vent-Free Firebox (VFD36FB0F) trimmed in black louvers, black hood, and shown with optional Brick Liner, black frame, black door frame and black arch doors (DVF-36BL, VFY-36-SBL, and VFR-36-SCBL). The Cherry Finish on the Standard 36-inch Corner Cabinet Mantel (EMC-36-C) adds drama and warmth to any setting.

Empire manufactures log sets and burners to suit any application in sizes ranging from 16 inches to 30 inches, in Natural Gas and LP.

We offer both ceramic fiber and traditional refractory concrete logs. Each log is hand-painted to bring out the rich detail.

All of our burners are available in Natural Gas and LP models.

Our Vented/Vent-Free Burners are approved for use in any certified vent-free firebox. They may be installed in an existing wood-burning fireplace, with the damper closed, to operate as a vent-free heating system.

Millivolt and manual burners are also certified for installation as vented log sets, so long as the installer blocks the fireplace damper partially open. A special flue-damper clamp is included with burner.

## Beyond Real

From the curve of each log to the height of the stack, your White Mountain Hearth Log Set complements the burner pattern for a lifelike fire. Complete the illusion with one of our optional Ember Bed Kits and Platinum Glowing Embers.

Your White Mountain Hearth Vent-Free logs create a consistent, controlled heat – without dangerous flare-ups or chilling die-downs. These gas logs warm your room quickly and efficiently, while using about half the energy of a vented gas log.



Ceramic Fiber Charred Oak Log Set (LS-24C2) with Slope Glaze Burner System (VFSR-24)

## Toss the Matches, Grab the Remote Control

Our Millivolt burners include an on/off switch but offer the option of using a wall thermostat, a remote control, or our combination thermostat/remote.

Take charge of your new 99.9 percent efficient Vent-Free variable log set with White Mountain Hearth's standard, two-button remote control. Adjust the flame height from a low glow to a roaring fire, or any comfort level in between.

Our new Intermittent Pilot systems – available in Slope Glaze and Harmony burners – eliminate the standing pilot for even greater fuel savings. IP systems include a thermostat remote control and must be installed in Vent-Free applications only.

Even our manually controlled log sets offer three heat levels, to keep the cold winds at bay without overheating the room.



Ceramic Fiber Super Charred Oak Log Set (LS-24C2S Shown) with Slope Glaze Burner System (VFSR-24)

# Harmony Burners and Logs

## Harmony Burners and Matching Log Sets

Our Harmony Burner serves as the basis for our premium line of meaty, massive log sets – the Wildwood and Canyon. Special baffles within the burner induce movement in the flow of gas to accentuate the naturally flickering flames.

Expanded ember bed models add another inch of glowing embers at the front of the fireplace.

- **Standard and Expanded Bed burners**
- **24-inch (38,000 Btu) and 30-inch (40,000 Btu) models in Vented/Vent-Free**
- **Millivolt models include an on/off switch but will operate with Empire remote controls and thermostats (VFNR)**
- **Intermittent Pilot models include a variable flame height thermostat remote control (30 percent turndown) (VFXI & VFNI)**
- **Choose Super Wildwood Refractory, Wildwood Refractory, or Canyon Ceramic Fiber Log Set**
- **Standing Pilot models include a variable flame height remote control (VFXV)**



Refractory Super Wildwood Log Set (LX-24WRS) on Harmony Burner (VFNI-24) with Decorative Cast Grate (DCG-24-BL)

# Harmony Burners and Logs



Refractory Wildwood Log Set (LX-24WR) on Harmony Burner with Expanded Ember Bed (VFXI-24)



Ceramic Fiber Canyon Log Set (LX-24CF) on Harmony Burner with Decorative Cast Grate (DCG-24-BL)

## Log Sets (Require Harmony Burner)

Model	Log Set Description	Required Burner Size	Fits Empire Firebox	Ship Wt. (lb)
Ceramic Fiber				
LX-24CF	Canyon, 7-piece	24	VFN(R/I)24 fits: VFD36, VFP36, VFS36 VFX(L/V)24 fits: VFP36, VFS36	11
LX-30CF	Canyon, 7-piece	30	VFN(R/I)30 fits: VFD42, VFP42, VFS42 VFX(L/V)30 fits: VFP42, VFS42	15
Refractory				
LX-24WR	Wildwood, 5-piece	24	VFN(R/I)24 fits: VFD36, VFP36, VFS36 VFX(L/V)24 fits: VFP36, VFS36	66
LX-30WR	Wildwood, 5-piece	30	VFN(R/I)30 fits: VFD42, VFP42, VFS42 VFX(L/V)30 fits: VFP42, VFS42	70
Refractory				
LX-24WRS	Super Wildwood, 8-piece	24	VFN(R/I)24 fits: VFD36, VFP36, VFS36 VFX(L/V)24 fits: VFP36, VFS36	66
LX-30WRS	Super Wildwood, 8-piece	30	VFN(R/I)30 fits: VFD42, VFP42, VFS42 VFX(L/V)30 fits: VFP42, VFS42	70

## Harmony Burners (fits Empire Deluxe, Premium, and Select Fireboxes)

Model	Description	Log Length (inches)	Btu Input	Non-Empire Minimum Firebox Dimensions				Ship Wt. (lb)
				Front Width (inches)	Rear Width (inches)	Depth (inches)	Height (inches)	
Vented/Vent-Free - On/Off Millivolt, Standing Pilot								
VFNR-24	Harmony Burner, 24-inch	24	38,000	30	24	14	18	13
VFNR-30	Harmony Burner, 30-inch	30	40,000	34	27	14	18	14
Vent-Free - Intermittent Pilot, Includes Thermostat Remote Control								
VFNI-24	Harmony Burner, 24-inch	24	38,000	30	24	14	18	13
VFNI-30	Harmony Burner, 30-inch	30	40,000	34	27	14	18	14

## Vented/Vent-Free Harmony Burners with Expanded Ember Bed (fits Empire Premium and Select Fireboxes)

Model	Description	Log Length (inches)	Btu Input	Non-Empire Minimum Firebox Dimensions				Ship Wt. (lb)
				Front Width (inches)	Rear Width (inches)	Depth (inches)	Height (inches)	
Intermittent Pilot, Includes Thermostat Remote Control								
VFXI-24	Harmony Burner, 24-inch	24	38,000	30	24	16	18	17
VFXI-30	Harmony Burner, 30-inch	30	40,000	34	27	16	18	18
Variable Flame, Includes Variable Remote								
VFXV-24	Harmony Burner, 24-inch	24	38,000	30	24	16	18	17
VFXV-30	Harmony Burner, 30-inch	30	40,000	34	27	16	18	18

# Slope Glaze Burners and Logs



Ceramic Fiber Morgan Creek Log Set (LS-24MC) with Slope Glaze Burner System (VFSR-24)

## Slope Glaze Burners and Matching Log Sets

Our popular Slope Glaze Burners raise the standard for dancing flames. Internal ceramic beads tumble the gas to create exceptionally realistic flame movement. Eight log looks from which to choose.

- **16, 18, 24 and 30-inch Vented/Vent-Free Burners - up to 38,000 Btu**
- **18, 24 and 30-inch Vented Burners - up to 75,000 Btu**
- **Millivolt, Manual, Direct Ignition, and new Intermittent Pilot (with remote) models**
- **Choose from four Refractory and four Ceramic Fiber Log Sets**



Refractory Stacked Aged Oak Log Set (LS-24SRAO) with Slope Glaze Burner System (VFSR-24)



Ceramic Fiber Birch Log Set (LS-24B2) with Slope Glaze Burner System (VFSR-24)

## Slope Glaze Burners and Logs



Refractory Ponderosa Log Set (LS-24P) with Vented Slope Glaze Burner System (VSR-24) rated at 75,000 Btu

Our Vented Burners, available in the Slope Glaze Series only, are rated at up to 75,000 Btu to create taller flames. Vented log sets are rated as decorative systems (not for use as heaters), and must be installed in a vented fireplace with the damper open and may not operate on a thermostat. Vented Slope Glaze burners are available in 18, 24, and 30 inches in Millivolt and manual models. The Millivolt Vented Burners may be operated with an on/off remote control or wall switch.

# Slope Glaze Burners and Logs



Refractory Super Sassafras Log Set (LS-24RSS) with Slope Glaze Burner System (VFSR-24)

## Log Sets (Require Slope Glaze Burner)

Model	Log Set Description	Required Burner Size	Fits Breckenridge Firebox	Ship Wt. (lb)
<b>Ceramic Fiber</b>				
LS-18MC	Morgan Creek, 6-piece	18	VFD32FB/VFP32FB/VFS32FB	6
LS-24MC	Morgan Creek, 6-piece	24	VFD36FB/VFP36FB/VFS36FB	8
LS-30MC	Morgan Creek, 6-piece	30	VFD42FB/VFP42FB/VFS42FB	10
LS-18B2	Birch, 4-piece	18	VFD32FB/VFP32FB/VFS32FB	7
LS-24B2	Birch, 4-piece	24	VFD36FB/VFP36FB/VFS36FB	10
LS-30B2	Birch, 4-piece	30	VFD42FB/VFP42FB/VFS42FB	10
LS-16C	Charred Oak, 4-piece	16	VFD32FB/VFP32FB/VFS32FB	4
LS-18C2	Charred Oak, 4-piece	18	VFD32FB/VFP32FB/VFS32FB	6
LS-24C2	Charred Oak, 4-piece	24	VFD32FB/VFP32FB/VFS32FB	9
LS-30C2	Charred Oak, 4-piece	30	VFD36FB/VFP36FB/VFS36FB	9
LS-18C2S	Super Charred Oak, 6-piece	18	VFD32FB/VFP32FB/VFS32FB	7
LS-24C2S	Super Charred Oak, 6-piece	24	VFD36FB/VFP36FB/VFS36FB	13
LS-30C2S	Super Charred Oak, 6-piece	30	VFD42FB/VFP42FB/VFS42FB	13
<b>Refractory</b>				
LS-18SRAO	Stacked Aged Oak, 7-piece	18	VFD32FB/VFP32FB/VFS32FB	29
LS-24SRAO	Stacked Aged Oak, 7-piece	24	VFD36FB/VFP36FB/VFS36FB	35
LS-30SRAO	Stacked Aged Oak, 7-piece	30	VFD42FB/VFP42FB/VFS42FB	40
LS-18RS	Sassafras, 6-piece	18	VFD32FB/VFP32FB/VFS32FB	37
LS-24RS	Sassafras, 6-piece	24	VFD36FB/VFP36FB/VFS36FB	40
LS-30RS	Sassafras, 6-piece	30	VFD42FB/VFP42FB/VFS42FB	50
LS-18RSS	Super Sassafras, 7-piece	18	VFD32FB/VFP32FB/VFS32FB	52
LS-24RSS	Super Sassafras, 7-piece	24	VFD36FB/VFP36FB/VFS36FB	56
LS-30RSS	Super Sassafras, 7-piece	30	VFD42FB/VFP42FB/VFS42FB	66
LS-18P	Ponderosa, 13-piece	18	VFD32FB/VFP32FB/VFS32FB	55
LS-24P	Ponderosa, 13-piece	24	VFD36FB/VFP36FB/VFS36FB	60
LS-30P	Ponderosa, 13-piece	30	VFD42FB/VFP42FB/VFS42FB	66



# Slope Glaze Burners and Logs



Refractory Sassafras Log Set (LS-24RS) with Slope Glaze Burner System (VFSR-24)

## Vented/Vent-Free Slope Glaze Burners

Model	Description	Log Length (inches)	Btu Input	Non-Empire Minimum Firebox Dimensions				Ship Wt. (lb)
				Front Width (inches)	Rear Width (inches)	Depth (inches)	Height (inches)	
Manual, Standing Pilot/Piezo								
VFSM-18	Slope Glaze Burner	18	32,000	32	21	14	17	22
VFSM-24	Slope Glaze Burner	24	36,000	34	27	14	18	25
VFSM-30	Slope Glaze Burner	30	38,000	38	30	14	20	32
On/Off Millivolt, Standing Pilot								
VFSR-16	Slope Glaze Burner	16	25,000	24	18	11 1/2	18	18
VFSR-18	Slope Glaze Burner	18	32,000	28	17	14	17	24
VFSR-24	Slope Glaze Burner	24	36,000	30	23	14	18	27
VFSR-30	Slope Glaze Burner	30	38,000	34	26	14	20	30
Variable Flame, Includes Variable Remote, Standing Pilot/Piezo								
VFSV-16	Slope Glaze Burner	16	25,000	24	18	11 1/2	18	18
VFSV-18	Slope Glaze Burner	18	32,000	28	17	14	17	24
VFSV-24	Slope Glaze Burner	24	36,000	30	23	14	18	27
VFSV-30	Slope Glaze Burner	30	38,000	34	26	14	20	30
Intermittent Pilot, Includes Thermostat Variable Remote								
VFSE-18	Slope Glaze Burner	18	32,000	28	17	14	17	25
VFSE-24	Slope Glaze Burner	24	36,000	30	23	14	18	28
VFSE-30	Slope Glaze Burner	30	38,000	34	26	14	20	31

## Vented Slope Glaze Burners (for use with open flue only)

Model	Description	Log Length (inches)	Btu Input	Minimum Firebox Dimensions				Ship Wt. (lb)
				Front Width (inches)	Rear Width (inches)	Depth (inches)	Height (inches)	
Manual, Standing Pilot/Match Light								
VSM-18	Slope Glaze Vented Burner	18	40,000/65,000	32	21	15	22	26
VSM-24	Slope Glaze Vented Burner	24	50,000/75,000	34	27	15	22	30
VSM-30	Slope Glaze Vented Burner	30	60,000/75,000	38	30	15	22	33
On/Off Millivolt, Standing Pilot/Match Light								
VSR-18	Slope Glaze Vented Burner	18	40,000/65,000	28	17	15	22	25
VSR-24	Slope Glaze Vented Burner	24	50,000/75,000	30	23	15	22	29
VSR-30	Slope Glaze Vented Burner	30	60,000/75,000	34	26	15	22	32

## Contour Log Set/Burner Systems

These systems combine the burner and log set into one package. Because they require a minimum just 12 inches firebox depth, these compact systems fit easily into most fireplaces.

- **18, 24 and 30-inch Vented/Vent-Free Burners - up to 40,000 Btu**
- **Millivolt (VFDR), Manual (VFDM), and Thermostat (VFDT) models**
- **Special 10,000 Btu Millivolt model for bedroom applications (where allowed by code)**
- **Choose Whiskey River Refractory or Flint Hill Ceramic Fiber model**

## Flint Hill Log Set

The Flint Hill Log Set features richly detailed, hand-painted Ceramic Fiber logs mounted atop our Vent-Free Contour Burner. Includes glowing embers to add to the illusion of a real wood fire at any heat setting.

This competitively priced log/burner is ideal for existing fireplaces and fireboxes, and for new construction.



Ceramic Fiber Flint Hill Log Set and Burner Combination (VFDR-24)

## Whiskey River Log Set

The Whiskey River Log set features the same burner and ember package as the Flint Hill, but with chunky, hand-painted Refractory logs.

The Whiskey River set delivers rich warmth and bold looks to complement any style.

The Flint Hill and Whiskey River also offered in 10,000 Btu models for bedroom applications, where allowed by code.



Refractory Whiskey River Log Set and Burner Combination (VFDR-18-LBW)

### Vent-Free Contour Burner & Log Set Combinations

Model	Log Set Description	Btu Input	Fits Breckenridge Model	Minimum Firebox Dimensions				Ship Wt. (lb)
				Front Width (inches)	Rear Width (inches)	Depth (inches)	Height (inches)	
<b>VFDR-18LB10</b>	Flint Hill, 5-piece	10,000	VFD32FB/VFP32/VFS32FB	28	17	12	17	21
<b>VFD(M,R,T)-18LB</b>	Flint Hill, 5-piece	28,000	VFD32FB/VFP32/VFS32FB	28	17	12	17	20
<b>VFD(M,R,T)-24LB</b>	Flint Hill, 5-piece	34,000	VFD32FB/VFP32/VFS32FB	30	23	12	18	22
<b>VFD(M,R,T)-30LB</b>	Flint Hill, 7-piece	40,000	VFD36FB/VFP36/VFS36FB	34	26	12	20	27
<b>VFDR-18LBW10</b>	Whiskey River, 6-piece	10,000	VFD32FB/VFP32/VFS32FB	28	17	12	18	48
<b>VFD(M,R,T)-18LBW</b>	Whiskey River, 6-piece	28,000	VFD32FB/VFP32/VFS32FB	28	17	12	17	48
<b>VFD(M,R,T)-24LBW</b>	Whiskey River, 6-piece	34,000	VFD32FB/VFP32/VFS32FB	30	23	12	18	54
<b>VFD(M,R,T)-30LBW</b>	Whiskey River, 6-piece	40,000	VFD36FB/VFP36/VFS36FB	34	26	12	20	67



White Mountain Hearth Stone River Log Set (LSU-24SF) on a Vent-Free Slope Glaze Vista Burner. Shown in a peninsula firebox with custom tile surround. The optional Large Log Embers Kit (EK-2) and Platinum Glowing Embers (PE20) add that extra spark of realism.

### Multi-Sided Slope Glaze Burners and Matching Log Sets

Designed to fit see-through and peninsula fireboxes, our Slope Glaze Vista Burners provide a great view from any angle. Ceramic beads inside the burner tumble the gas to create exceptionally realistic flame movement.

- **18, 24 and 30-inch Vented/Vent-Free Vista Burners - up to 40,000 Btu**
- **Millivolt models include an on/off switch but will operate with Empire remote controls**
- **Choose from Rock Creek Refractory or Stone River Ceramic Fiber Log Sets**

# Multi-Sided Log Sets and Burners



Rugged Refractory logs give the Rock Creek Log Set a rustic look on a grand scale.



Opposite Side View (above)  
and End View (below)



Opposite Side View (above)  
and End View (below)



The Stone River Ceramic Fiber Log Set provides a different look from every angle.  
The Slope Glaze Vista Burner neatly conceals its controls behind a sliding panel.

## Log Set Descriptions

Model	Log Set Description	Burner	Ship Wt. (lb)	Model	Log Set Description	Burner	Ship Wt. (lb)
Refractory				Ceramic Fiber			
LSU-18RR	Rock Creek, 9-Log	18	51	LSU-18SF	Stone River, 5-Log	18	10
LSU-24RR	Rock Creek, 11-Log	24	58	LSU-24SF	Stone River, 5-Log	24	12
LSU-30RR	Rock Creek, 11-Log	30	69	LSU-30SF	Stone River, 5-Log	30	15

## Vented/Vent-Free Slope Glaze Vista Burner

Model	Description	Log Length (inches)	Btu Input	Non-Empire Minimum Firebox Dimensions				Ship Wt. (lb)
				Front Width (inches)	Rear Width (inches)	Depth (inches)	Height (inches)	
Millivolt, Remote Ready								
VFSUR-18	Slope Glaze Vista Burner	18	36,000	22	22	17	17	24
VFSUR-24	Slope Glaze Vista Burner	24	38,000	28	28	17	18	29
VFSUR-30	Slope Glaze Vista Burner	30	40,000	32	32	17	18	34

# Loft Series Burners

## Loft Burner Systems

Loft Series Burners deliver a contemporary look with an artistic flair. Whether by itself, or accessorized to suit the room. Choose decorative tops and firebox liners, in reflective black or brushed stainless steel, and crushed glass in black polished, blue clear, and clear frost.

- **18, 24 and 30-inch Vented/Vent-Free Burners - up to 40,000 Btu**
- **Millivolt models include an on/off switch but will operate with Empire remote controls and thermostats**
- **Intermittent Pilot models include a variable flame height thermostat remote control (30 percent turndown)**
- **Special 10,000 Btu Millivolt model for bedroom applications (where allowed by code)**



Loft Series Burner (VFRL-24) with Stainless Steel Decorative Top (DT-24-SS). Shown in existing masonry firebox.

## Loft Burner Decorative Accessories



Top Row left to right: No Decorative Options, Polished Black Decorative Top, Brushed Stainless Steel Decorative Top.  
Bottom Row left to right: Blue Clear Decorative Glass, Clear Frost Decorative Glass, Polished Black Decorative Glass

# Loft Series Burners



Loft Series Multi-sided burner (VFRU-24) with Clear Frost Decorative Glass (DG-30-CLF).  
Shown in a Vent-Free peninsula firebox with Flush Louvers.

## Vented/Vent-Free Loft Series Burners

Model	Description	Btu Input	Fits Empire Fireboxes	Non-Empire Minimum Firebox Dimensions				Ship Wt. (lb)
				Front Width (inches)	Rear Width (inches)	Depth (inches)	Height (inches)	
On/Off Millivolt, Standing Pilot								
<b>VFRL-18-10</b>	Loft Burner, 18-inch	10,000	VF(D,P,S)32	28	21	13	17	13
<b>VFRL-18</b>	Loft Burner, 18-inch	26,000	VF(D,P,S)32	28	21	13	17	13
<b>VFRL-24</b>	Loft Burner, 24-inch	36,000	VF(D,P,S)36	34	27	13	18	15
<b>VFRL-30</b>	Loft Burner, 30-inch	40,000	VF(D,P,S)42	40	33	13	20	18
Intermittent Pilot, Includes Thermostat Variable Remote Control								
<b>VFIL-18</b>	Loft Burner, 18-inch	26,000	VF(D,P,S)32	28	21	13	17	14
<b>VFIL-24</b>	Loft Burner, 24-inch	36,000	VF(D,P,S)36	34	27	13	18	16
<b>VFIL-30</b>	Loft Burner, 30-inch	40,000	VF(D,P,S)42	40	33	13	20	18

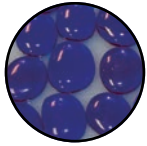
## Vented/Vent-Free Multi-Sided Loft Series Burners

Model	Description	Btu Input	Fits Empire Fireboxes	Non-Empire Minimum Firebox Dimensions				Ship Wt. (lb)
				Front Width (inches)	Rear Width (inches)	Depth (inches)	Height (inches)	
On/Off Millivolt, Standing Pilot								
<b>VFRU-24</b>	Multi-Sided Loft Burner, 24-inch	36,000	VFP36(S,P)B	28	28	17	18	20
Intermittent Pilot, Includes Thermostat Variable Remote Control								
<b>VFIU-24</b>	Multi-Sided Loft Burner, 24-inch	36,000	VFP36(S,P)B	28	28	17	18	20

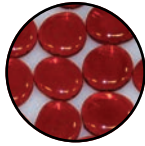
## Decorative Accessories for Loft Series Burners

Burner Size	Polished Black Decorative Top	Brushed SS Decorative Top	Black Polished Decorative Glass	Blue Clear Decorative Glass	Clear Frost Decorative Glass	Medium Sized Decorative Rocks	Accent Pebbles
Standard Loft Burners							
<b>18-inch</b>	DT-18-PB	DT-18-SS	DG-1-BKP	DG-1-BUC	DG-1-CLF	DR-1-FMA	DRFPA
<b>24-inch</b>	DT-24-PB	DT-24-SS	DG-1-BKP	DG-1-BUC	DG-1-CLF	DR-1-FMA	DRFPA
<b>30-inch</b>	DT-30-PB	DT-30-SS	DG-1-BKP	DG-1-BUC	DG-1-CLF	DR-1-FMA	DRFPA
Multi-Sided Loft Burners							
<b>24-inch</b>	DT-24-PB	DT-24-SS	DG-1-BKP	DG-1-BUC	DG-1-CLF	DR-1-FMA	DRFPA

## Decorative Media



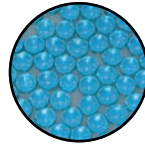
Topaz Clear Drops  
One-inch



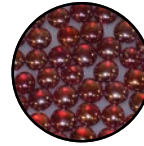
Ruby Clear Drops  
One-inch



Onyx Solid Drops  
One-inch



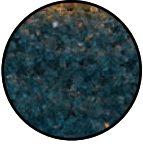
Aqua Blue Droplets  
1/2-inch



Sangria Luster Droplets  
1/2-inch



Glacier Ice Droplets  
1/2-inch



Blue Clear Crushed



Clear Frost Crushed



Black Polished Crushed



Medium Sized  
Decorative Rocks



Accent Pebbles

## Control Accessories

Model	Description	Ship Wt.
FRBC	Battery Operated Remote Control	1
FRBTC	Battery Operated Remote Control w/ Thermostat	1
FREC	Electric Remote Control	1
FRBTP	Programmable Remote Control, Battery Operated	2
FWS-1	Wall Switch	1
TMV	Wall Thermostat, Millivolt - Reed Switch	2
TRW	Wireless Remote Wall Thermostat	2

## Log Set Accessories

Model	Description	Ship Wt.
ADV110-6V	Adapter 110 AC to 6 Volt DC (fits VFSE Burners)	2
DCG-24-BL	Decorative Cast Grate, 24-inch, Black (Slope & Harmony only)	10
EK-1	Ember Kit	4
EK-2	Large Log Ember Kit	8
ELH-1	Adjustable Fireplace Hood (28-inch to 48-inch) Black	5
PE20	Platinum Glowing Embers (1 set)	1
PE20-12	Platinum Glowing Embers (Box of 12)	2



EK-1 Traditional Ember Bed Kit includes six burnt log pieces, white ash, and lava rock.



EK-2 Large Ember Kit available for Multi-sided log sets or large fireplaces.



24-Inch Sassafras Log Set (LS-24RS) on Vent Free Slope Glaze Burner with LR-24 Log Riser in Vent Free Select Firebox.



Decorative Cast Grates (DCG-24-BL) on 24-Inch Canyon Log Set (LS-24RS) on Vent Free Harmony Burner.

Gas Inlet	
Type of Gas (State on Order)	Natural or LP
Iron Pipe Size (N.P.T.)	3/8-inch
Ignition System	Standing Pilot/Piezo and Intermittent Pilot
Warranty	
All vented parts carry a 3-year limited warranty.	
All vent-free parts carry a 5-year limited warranty with a 5-year limited labor warranty.	
Remote control systems carry a 1-year limited parts warranty	
Installation and Safety	
Pilot equipped with automatic shut-off and Oxygen Depletion Sensor on Vent-Free Burners. Refer to your Owner's Manual for complete installation and safety information.	

Member of the following industry associations:



This appliance is design-certified to the ANSI standard by:

Empire is committed to continuous product improvement; specifications are subject to change without notice. Dimensions in this brochure are approximate; read and follow the framing dimensions in the owners manual supplied with your Empire product. Flame size, shape, and color will vary from photos. Log Sets shown with Platinum Glowing Embers (PE20) and Ember Bed Kit (EK-1).

NC BASED & FAMILY OWNED SINCE 1930

www.gabenergy.com

Advance	336.998.9748
Boone	828.262.3657
Elkie	336.836.3607
Millers Creek	336.973.2411
Mills River	828.891.7371
Pilot Mountain	336.368.3678
Sparta	336.372.4443
Statesville	704.873.4747
Wenonah	828.645.1007

fireplaces · heaters · grills · mantels · outdoor living

WMH-00046 1/01/13