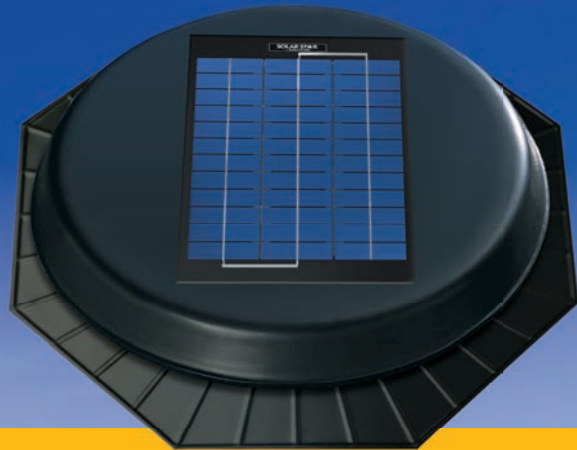


# Roof Mount



## RM 1200\*

The RM 1200 is a classic attic fan solution for low slope roofs and small attic spaces.



## RM 1600

Boasting added power, the RM 1600 is an option for steep pitched roofs, large attic spaces and extreme climates.

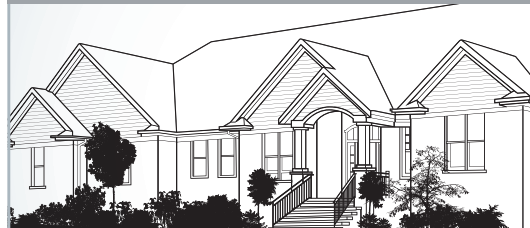
**NEW!**

Typical RM 1200 Application



See back for more quantity guidelines.

Typical RM 1600 Application



See back for more quantity guidelines.

Roof Mount Attic Fans available in these attractive profiles:

### Low Profile



This sleek, discreet design is for most roof applications.

### Pitched



A great alternative for north facing roofs when you need to improve exposure to the sun. It's ideal for tile roofs when used with the self-flashing Tile Roof Add-on Kit (sold separately).

### High Profile



This unobtrusive, aerodynamic design is perfect for locations with heavy snow loads. It's also another option for tile roofs when "mudding in" is preferred.

# Interior Mount



## IM 1200

Alternatively, the Interior Mount is a discreet choice to turn existing passive attic fans to active solar-powered solutions.

Great for Converting:

### Gable Vents



### Whirlybirds



### Dormer Vents



### Powered Vents



# Accessories



## RM 1200 Add-On Panel

An ideal addition for instances when continuous sun exposure is limited. Compatible with any Solar Star product.



## Thermal Switch

Automatically activates when temperatures reach approximately 85° F and deactivates when temperatures drop below 65° F. Easily installs on all Solar Star models.

## How Many Do I Need?

Attic Zone Size (sf/m <sup>2</sup> )	Roof Pitch Up to 4/12	Roof Pitch 5/12 to 8/12	Roof Pitch 9/12 to 12/12
800/74	1 - RM 1200	1 - RM 1200	1 - RM 1600
1,200/111.5	1 - RM 1200	1 - RM 1600	1 - RM 1600
1,600/149	2 - RM 1200 or 1 - RM 1600	1 - RM 1600	2 - RM 1600
2,000/186	1 - RM 1600	2 - RM 1600	2 - RM 1600
2,400/223	2 - RM 1600	2 - RM 1600	3 - RM 1600

■ Represents smaller attic zones ■ Represents larger attic zones

### Recommended air intake venting (eaves or soffits) size requirements:

- ▶ Attic Area (square feet)/2 = Square inches of inlet vent area
- ▶ Attic Area (square meter)/0.29 = Square centimeters of inlet vent area

### NC BASED & FAMILY OWNED SINCE 1930



www.gbenergy.com

Advance 336.998.9748  
 Boone 828.262.3637  
 Elkin 336.835.3607  
 Millers Creek 336.973.2411  
 Mills River 828.891.7371  
 Pilot Mountain 336.368.3678  
 Sparta 336.372.4443  
 Statesville 704.873.4747  
 Weaverville 828.645.1007  
 fireplaces . heaters . grills . outdoor living  
 tankless hot water . boilers . awnings



www.solatube.com

2210 Oak Ridge Way, Vista, CA 92081  
 800-966-7652 • Fax 760-599-5181

Part No. 951643 v2.3 ©Copyright 2012



\*Consult a Tax Professional for eligibility requirements.  
 Visit www.solatube.com for more information.

**SOLAR STAR**  
 by SOLATUBE



Make your  
**Attic** more  
**Bearable**



**New attic ventilation options now available!**

Introducing...

# The Solar Star Family of Products

The Solar Star family of products feature the right solution for any attic ventilation situation.



### Climate Control

Regulate attic temperature for more comfortable living spaces.



### Reduce Damaging Moisture

Help eliminate mold and prolong roof life.



### Prevent Ice Damming

Keep your attic ventilated and eliminate ice buildup.



### Robust Design

Select Solar Star fans meet High Velocity Hurricane Zone requirements.



### Solar-Powered Design

Built-in photovoltaic power takes a bite out of electric bills.



### Easy to Install

Quickly installs with no wiring assembly. Leak-proof flashing compatible with all roof types.

### How Solar Star Works

Solar Star Attic Fans draw hot air and moisture out of the attic and discharge to the exterior.

